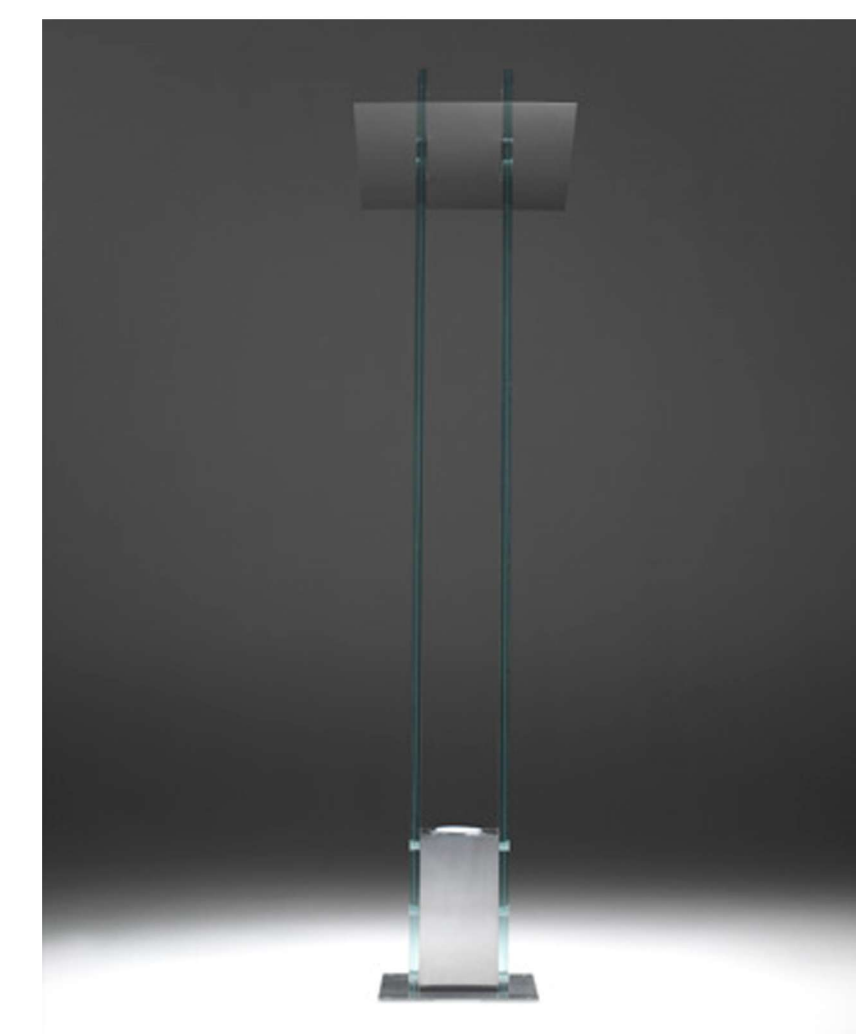
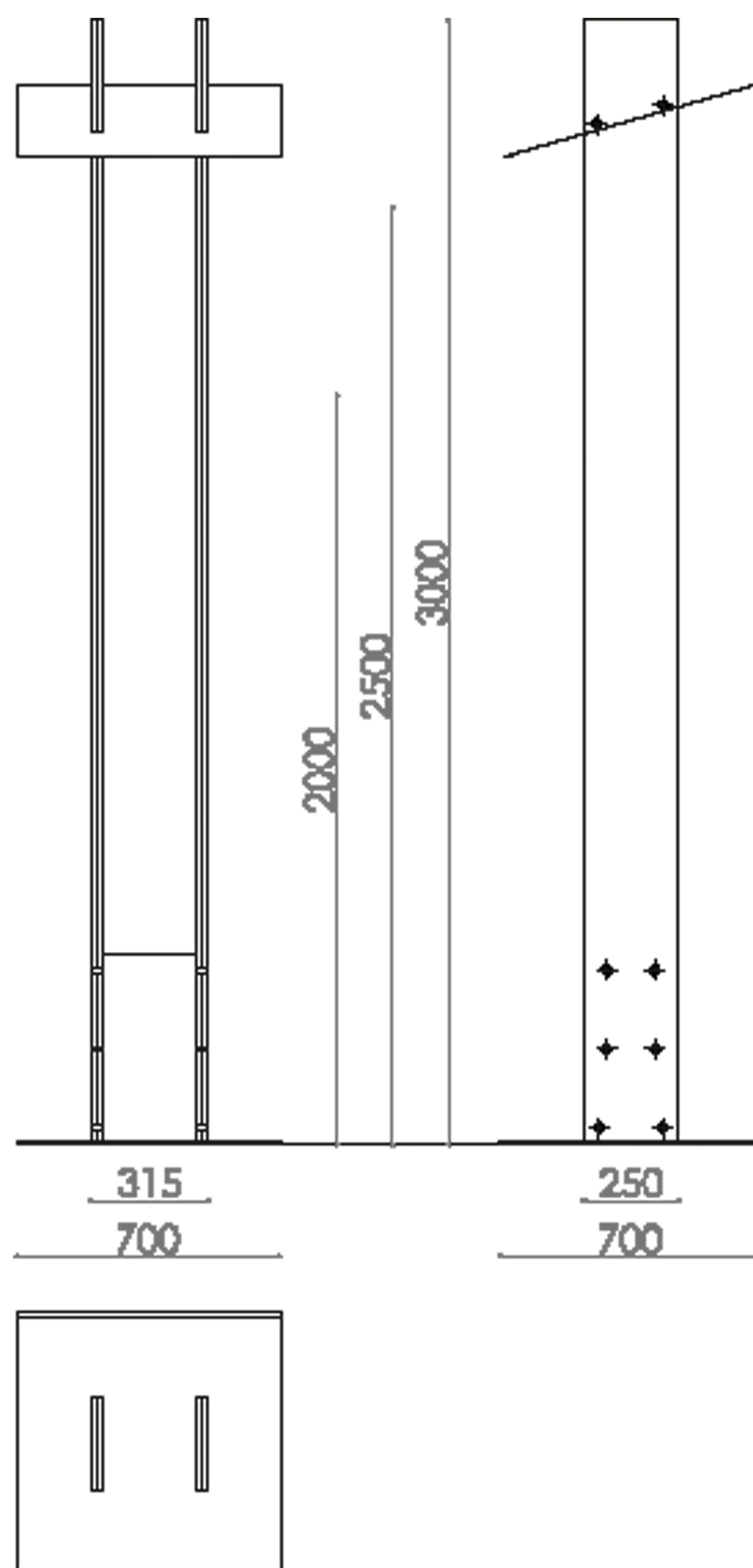


# SANTAMBROGIO | MILANO

## THE LAMP



- MADE IN EXTRACLEAR TRANSPARENT GLASS, THICK. 15+15 MM TEMPERED AND LAMINATED
- AVAILABLE IN 200 DIFFERENT COLORS ( RAL CODE REFERENCE), TRANSPARENT OR FROSTED
- LIGHTING UNIT IN POLISHED STAINLESS STEEL.
- REFLECTIVE FLANGE IN POLISHED STAINLESS STEEL.

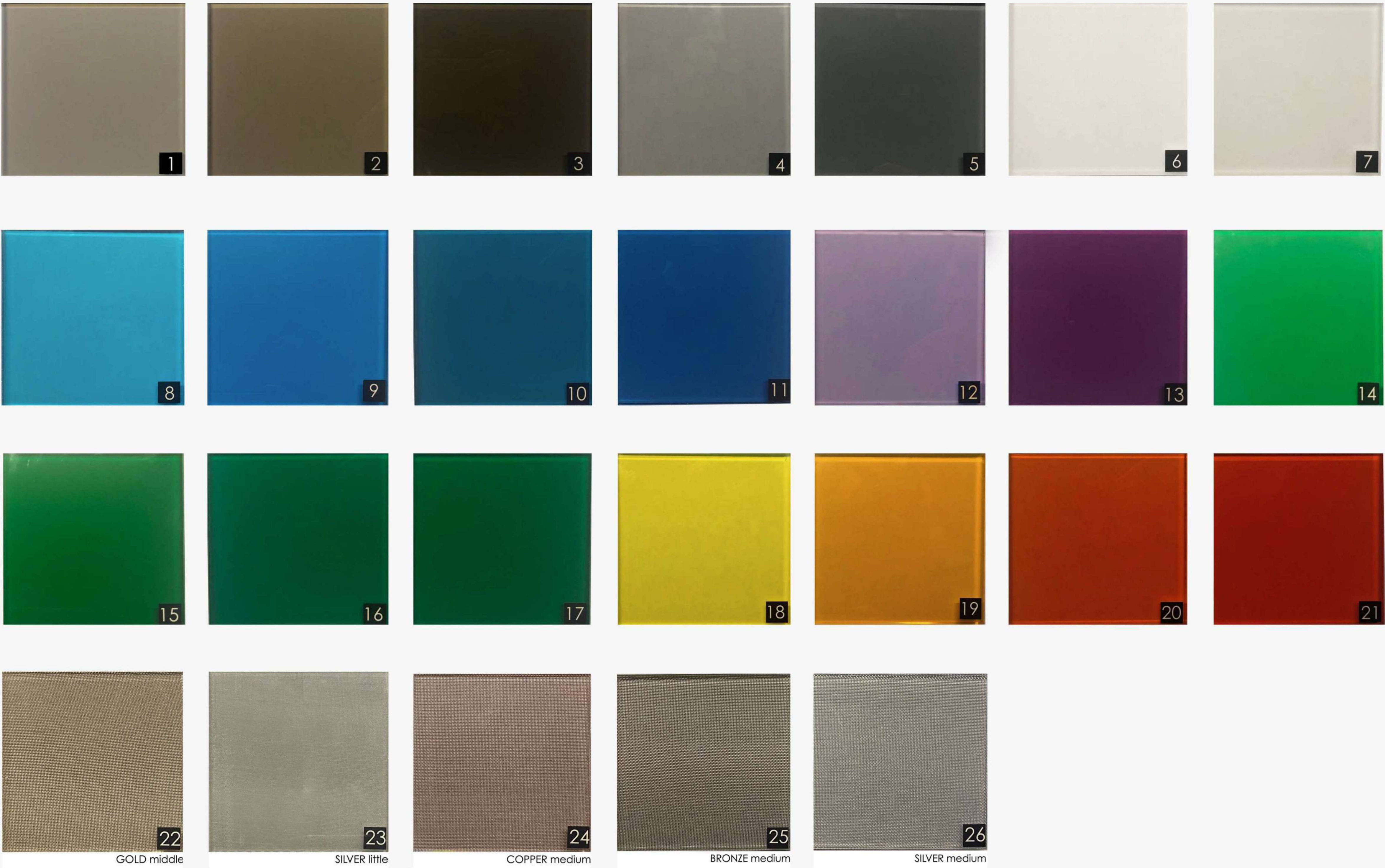




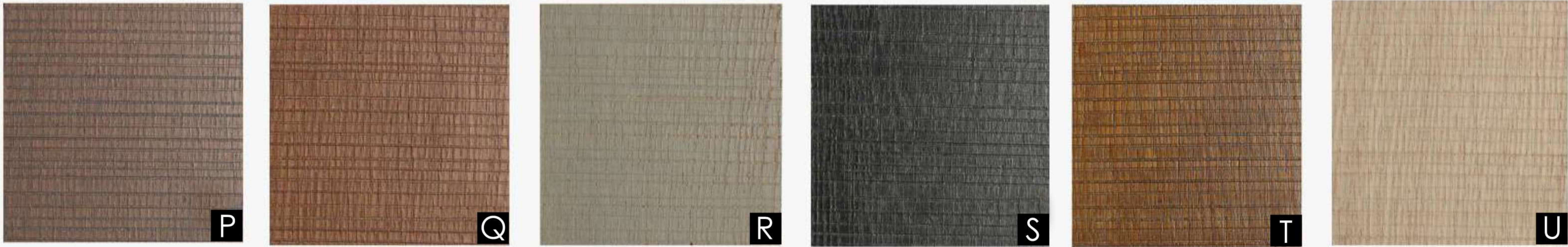
# SANTAMBROGIO | MILANO

THE PING PONG TABLE

## GLASS



## WOOD



## METAL

