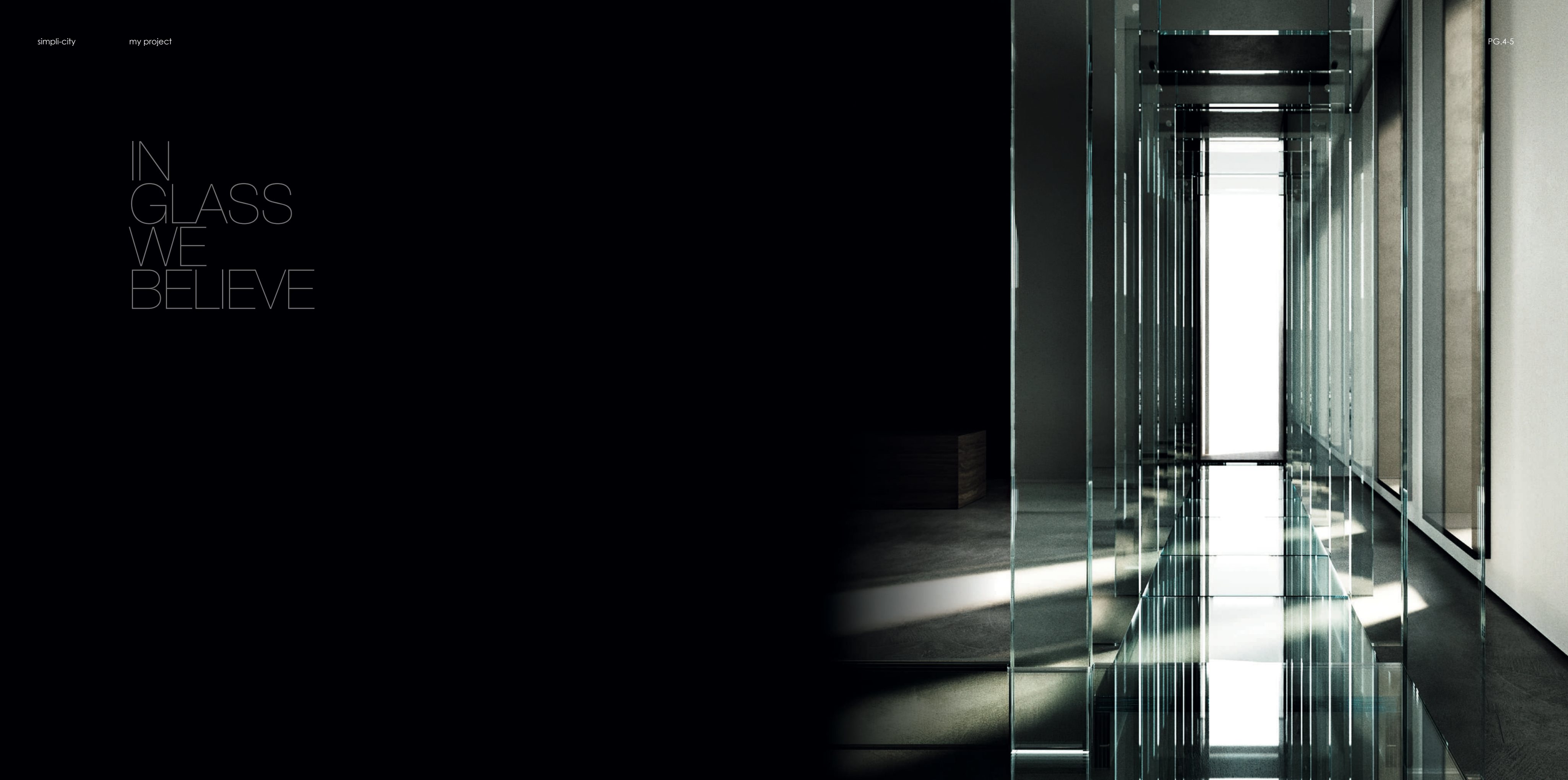


A close-up, high-contrast, black and white photograph of a person's eyes. The eyes are looking directly at the camera, with long, dark eyelashes and well-defined eyebrows. The image is very dark, with the eyes being the primary light source.

santambrogio milano
on off design ideas

IN
GLASS
WE
BELIEVE



HOW A PERCEPTION IS BORN

CONNECT TO REALITY WITH MIND.
FILTER EVERY SINGLE ELEMENT
THROUGH OUR SENSES.
TO DESIGN SUBSTANCE INSIDE
OF THOUGHT AND RETURN LIKE
CONSISTENCY.
THE MOTIVATIONS ARE ALWAYS
DIFFERENT, BECAUSE OUR MIND
IS DIFFERENT FOR EVERY SENSE
EXPERIENCE.
THIS IS HOW THE VISION OF
AN ELEMENT LIKE GLASS IN
THE BEGINNING APPEARS
AS IMMATERIAL FLUID
TRANSPARENCY AND THEN
BECOMES MATTER.
SANTAMBROGIO | MILANO IS LIKE
THAT: STARTED IN 2000
BY ARCHITECT CARLO
SANTAMBROGIO IN
COLLABORATION WITH
DESIGNER ENNIO AROSIO,
SANTAMBROGIO | MILANO
SEE "THROUGH" GLASS, TURNS
AN SYMPLE MATERIAL INTO A
PROTAGONIST, CREATES SPACES
THAT ESCAPE THE PLACE AND
EXTEND IT IN THE DESIGN OF
PUBLIC AND PRIVATE SPACES,
AN EXCLUSIVE COLLECTION OF
STRUCTURES AND FURNITURE
PIECES, WITH AN ARCHITECTURAL
AND UNMISTAKABLE STYLE,
ALWAYS CUSTOMIZED.

THE SCENT OF GLASS



IT IS THE MOST UNDERESTIMATED SENSE BUT IT IS ALSO THE MOST POWERFUL, THE FRAGRANCE. WE LIVE IN AN ENVIRONMENT OF FRAGRANCES AND PERFUMES THAT CHARM AND EMOTION US SINCE WE ARE BORN. THEY ENTER THE MIND TO BECOME MEMORY AND THEY MAKE BACK MEMORIES THAT TRIGGER IRRESISTIBLE PASSIONS. GLASS DOES NOT HAVE A PERFUME. IT HAS INFINITE SCENTS. FROM A SOLID SURFACE, IT BECOMES PAPER AND ABSORBING OUR FRAGRANCES, OUR STYLE, OUR PERSONALITY. THE PERFUME, LIKE AS EAU DE PARFUM, IS TRADITIONALLY CONTAINED IN THE GLASS AND THE VIEW OF THE BOTTLE OPENS OUR FANTASY ABOUT THE FRAGRANCE THAT WE WILL FEEL SOON. BUT EVERY GLASS WE SEE TRIGGES IMAGINATION. BECAUSE IT IS, BUT IT SEEMS NOT TO BE THERE, BECAUSE IT IS ALL OR NOTHING. BECAUSE IT SEPARATES, REPAIRS, SUPPORTS, CONTAINS, OPENS, IT CLOSES. NEVER HIDDEN, ALWAYS GIVING ALL ITS TRANSPARENCY OR COLOR.

EVERY CREATION BY SANTAMBROGIO | MILANO IS BASED ON THESE CONCEPTS. IT IS REPEATED IN ITS SHAPE AND IN THE SAME WAY ON DIFFERENT

STAIRS, IN EVERY SINGLE GLASS SHEET THERE IS A PART OF THE WHOLE, THE ESSENCE OF RESEARCH, OF THE IDEA, OF THE REALIZATION OF SANTAMBROGIO | MILANO. THE PERFECT SHAPES, THE VIBRANT SENSATIONS, VISIONARY ARCHITECTURES: AN OLFATORY JOURNEY WHICH IS AT THE CONTEMPORARY PERSONAL AND OF EVERYONE, IN AMAZING AND SECRETS OF THE WORLD THAT DISCLOSE TO OUR EXPERIENCE.

GLASS RESEARCH AND INNOVATION FOR ARCHITECTURE

FROM THE EIGHTIES, TECHNOLOGICAL EVOLUTION AND RESEARCH ON GLASS TO INCREASE ITS PERFORMANCE HAVE MADE GIANTS STEPS, FAVORING THE USE OF THIS MATERIAL IN ARCHITECTURE, IN CIVIL AND RESIDENTIAL CONSTRUCTION. A NEW GENERATION OF "SMART" GLASSES WAS CREATED, MATERIALS CAPABLE OF RESPONDING DINAMICALLY TO ENVIRONMENTAL CHANGES,

ENSURING A HIGH COMFORT LEVEL INSIDE LIVING SPACES AND REDUCING ENERGY DISPERSION. GLASSES ABLE TO RESPOND TO EXTERNAL STIMULI BY CHANGING THEIR CHARACTERISTICS OF TRANSPARENCY, BRIGHTNESS AND COLOR ACCORDINGLY, MAINTAINING UNALTERED THEIR STRUCTURAL PROPERTIES.



TRANSPARENCY
THAT
MAKES
DESIGN
AND
ARCHITECTURE



AN IDEA BECOMES A VISION OF ITALIAN DESIGN

THE VISION OF ITALIAN DESIGN BY
SANTAMBROGIO | MILANO
IT'S BASED ON TECHNICAL
INNOVATION, ON THE RESEARCH
OF STYLE AND ENVIRONMENTAL
AWARENESS.

WITH CONTINUOUS RESEARCH
AND TEST, DECLINES THE
GLASS IN DIFFERENT COLORS
AND SURFACES, CAREFULLY
CHECKING THE ENTIRE
PRODUCTION PROCESS AND
GUARANTEEING THE MAXIMUM
QUALITY OF THE DESIGN PIECES.
THE INNOVATION OF
SANTAMBROGIO | MILANO
IT IS ALSO EXPRESSED IN
RESEARCH OF SOLUTIONS TO
IMPROVE ENVIRONMENTAL
QUALITY STANDARDS THROUGH
THE USE OF GLASS AS A TOTALLY
RECYCLABLE MATERIAL, ALSO
TREATED WITH ADVANCED
PAINTING TECHNOLOGIES
WITHOUT HARMFUL SUBSTANCES.
ALSO THE PACKAGING SYSTEMS

ARE RESPECTFUL OF EVERYTHING
SURROUNDING, WITH A REDUCED
ENVIRONMENTAL IMPACT.
A UNIQUE AND CONSISTENT
IDENTITY, HIGH TECHNOLOGICAL
STANDARDS OF THE PRODUCTION
PROCESS, A PERCEPTIVE MODE
IN CONTINUOUS CHANGE,
TRANSFORM GLASS IN A
CONCRETE EMOTION AND
SANTAMBROGIO | MILANO IN
A 100% MADE IN ITALY REALITY
WITH A STRONG INTERNATIONAL
ORIENTATION.



BUILD A 100% RECYCLABLE HOUSE

CARLO SANTAMBROGIO,
ARCHITECT AND FOUNDER OF
SANTAMBROGIO | MILANO, HAS
ALWAYS BEEN FASCINATED
BY GLASS AND CONVINCED OF ITS
INFINITE POTENTIALITIES.
THAT IS WHY HE CHOSE THIS
INCREDIBLE MATERIAL TO DESIGN
AND PRODUCE HIS EXCLUSIVE
FURNITURE COLLECTION AND TO
REALIZE HIS DREAM OF A 100%
RECYCLABLE HOUSE, MADE ENTIRELY
OF GLASS.



SIMPLICITY COLLECTIONS

ENNIO AROSIO DESIGN



GOOD DESIGN

OVER THE ROOFS OF MILAN, SANTAMBROGIO L MILANO CREATED A GLASS TERRACE, A REAL HOUSE “EN PLAIN AIR” ON A LARGE ROOF-TOP IN THE CENTRE OF MILAN, TOTALLY MADE IN TRANSPARENT GLASS. ALSO IN THIS PROJECT, GLASS IS THE MAIN ACTOR PLAYING A ROLE BOTH STRUCTURAL AND DECORATIVE.

A FLOOR MADE OF WHITE GLASS UNDER YOUR FEET AND A BLUE SKY OVER YOUR HEAD EXPLORING THE TERRACE, YOU WILL FIND A KITCHEN, A LONG TABLE, A TUB WITH COMFORTABLE SEATS AND SOFA, COMPLETELY REALIZED IN GLASS. A GLASS PERGOLA HOUSES

AND SUPPORTS THE BRANCHES AND CLUSTERS OF TWO OLD VINES WAITING FOR THE AUTUMN HARVEST TOTALLY TRANSPARENT DURING THE DAY, THE GLASS STRUCTURES TURN ON AT NIGHT THANKS TO LED STRIPS POSITIONED AT THE BASIS OF THEM SO THAT LIGHT DRAWS THEIR SHAPE IN THE DARK RUNNING ALONG THE GLASS. SANTAMBROGIO L MILANO LA TERRAZZA - A UNIQUE AND INIMITABLE PLACE REALISED UNDER THE SIGN OF TRANSPARENCY.



THE BOOKCASE



THE BOOKCASE



THE BOOKCASE



THE BOOKCASE



THE BOOKCASE



THE BOOKCASE



THE BOOKCASE



THE BOOKCASE



THE
TABLE



THE TABLE



THE
CATHERINE
WHEEL
TABLE



THE
TABLE



THE
COLORED
TABLE





PING
PONG
TRANS
FORMER



THE SIDEBOARD



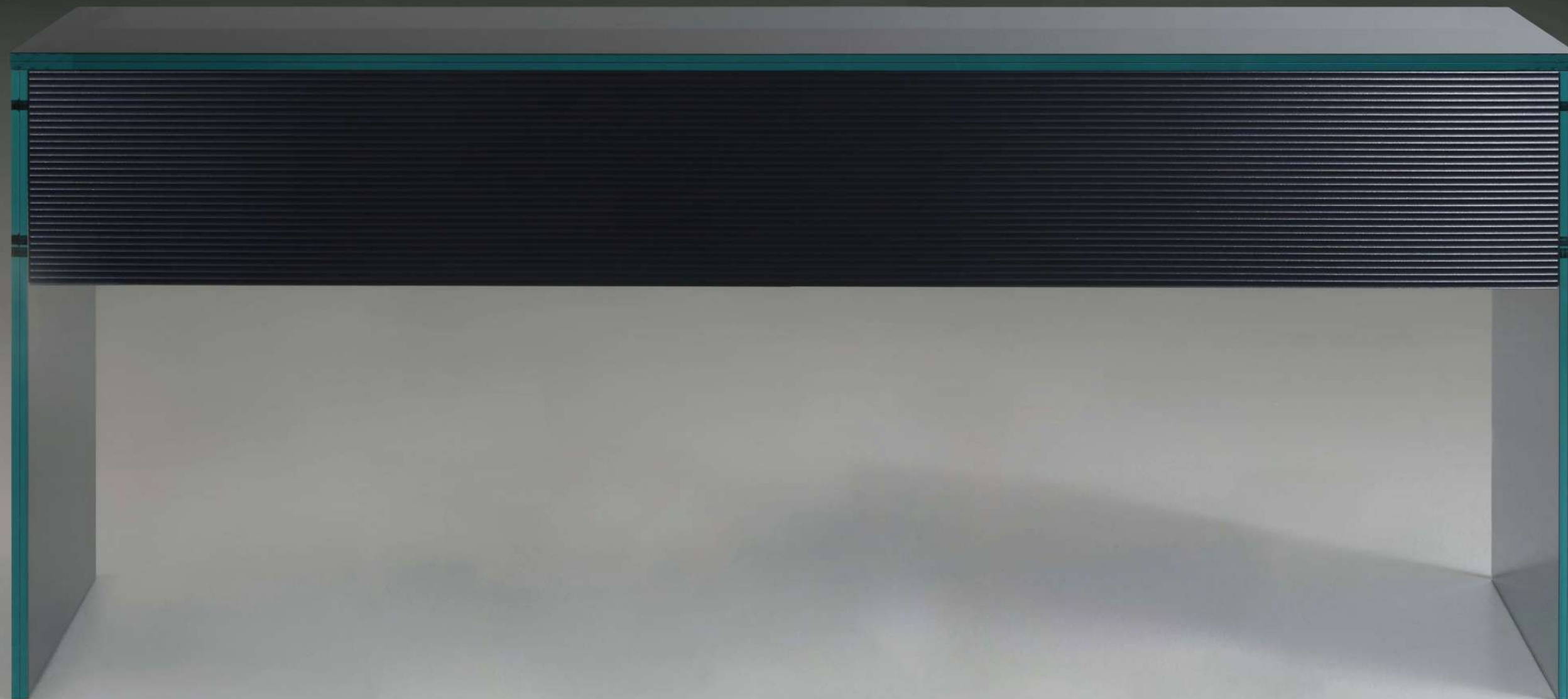
THE SIDEBOARD



THE
SIDEBOARD



THE COUNTER BAR



THE COUNTER BAR



THE COUNTER BAR



THE POOL TABLE



THE POOL TABLE



THE SOFA



THE SOFA



THE SOFA



THE SOFA

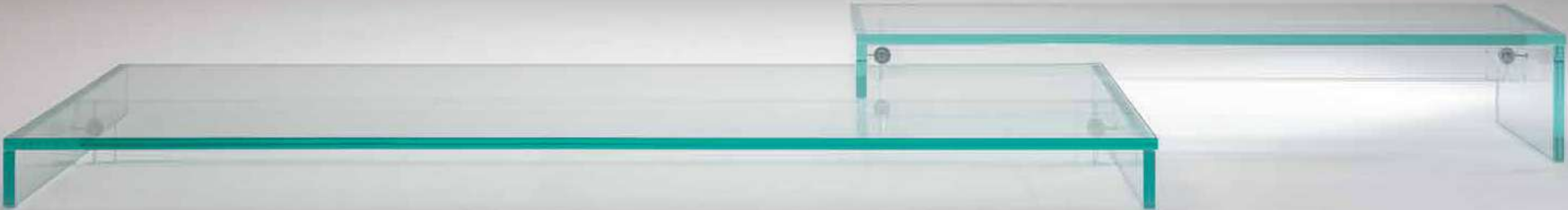


THE BENCH





THE MODULAR BENCH



THE MODULAR BENCH



THE BATH



THE BATH



THE BATH



THE KITCHEN





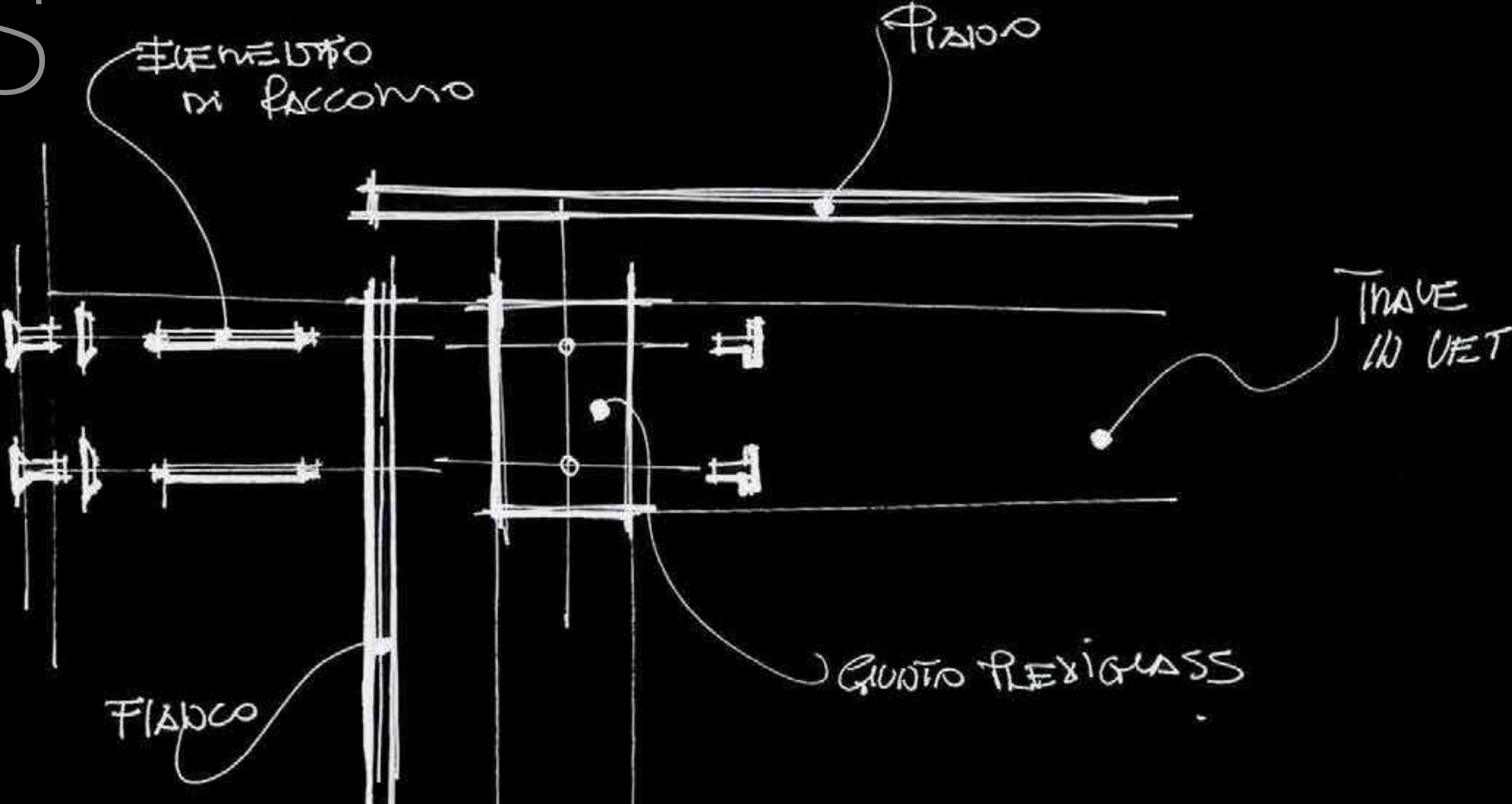
THE
BED



THE
BED



CASE STUDIES



THE GLASS HOUSE

WHAT ARE THE BENEFITS OF LIVING
IN A GLASS HOUSE?
THE GLASS HOUSE REFLECTS
A LIFESTYLE THAT INTEGRATES
PERFECTLY WITH THE
SURROUNDING ENVIRONMENT,
SUPPORTING IT, POSITIVITY,
SENSATIONS THAT CHANGE WITH
THE PASSING OF THE DAY.

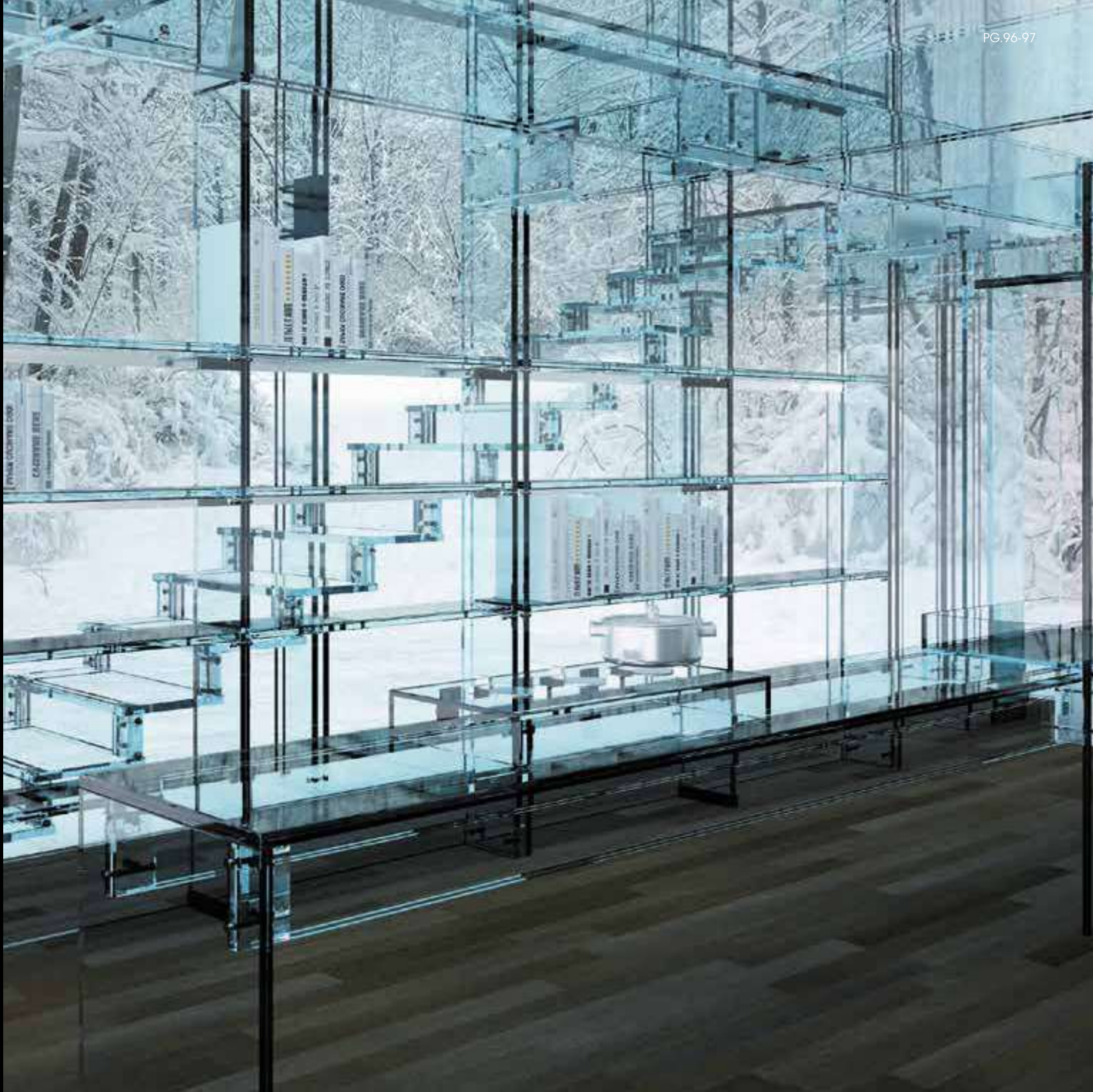
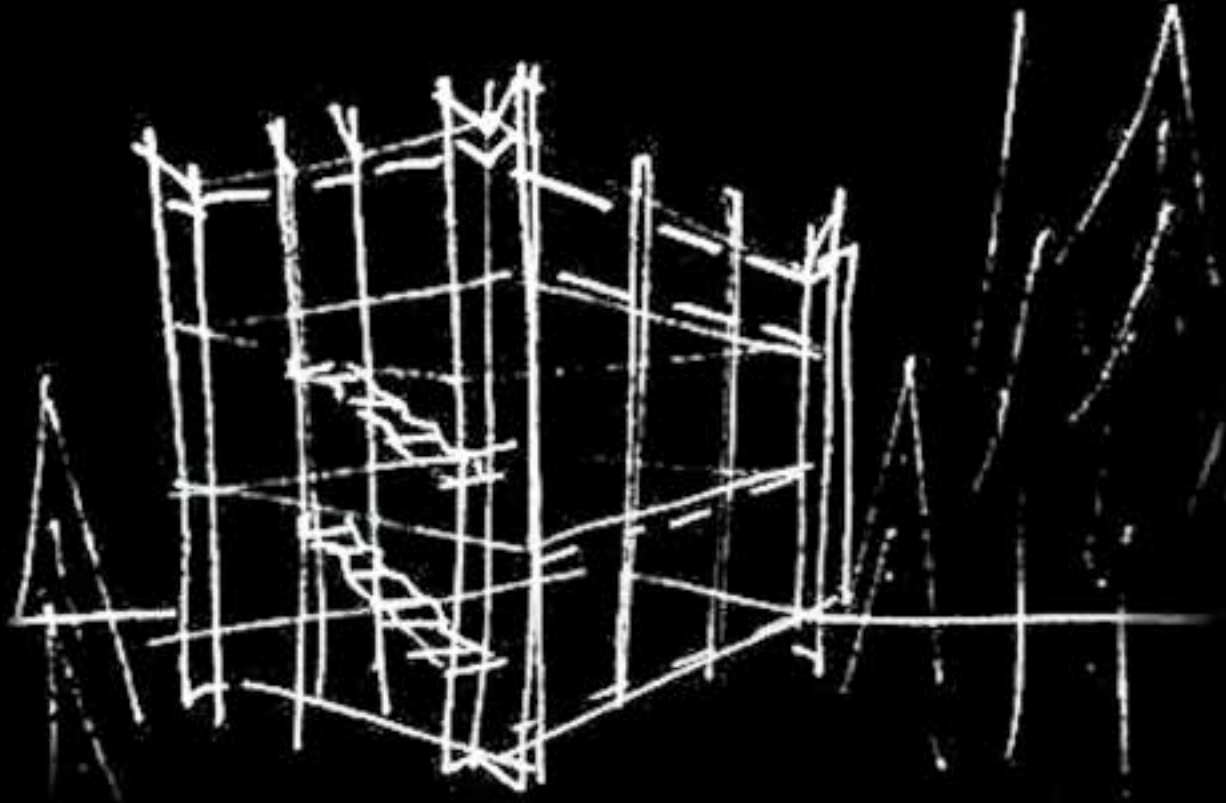




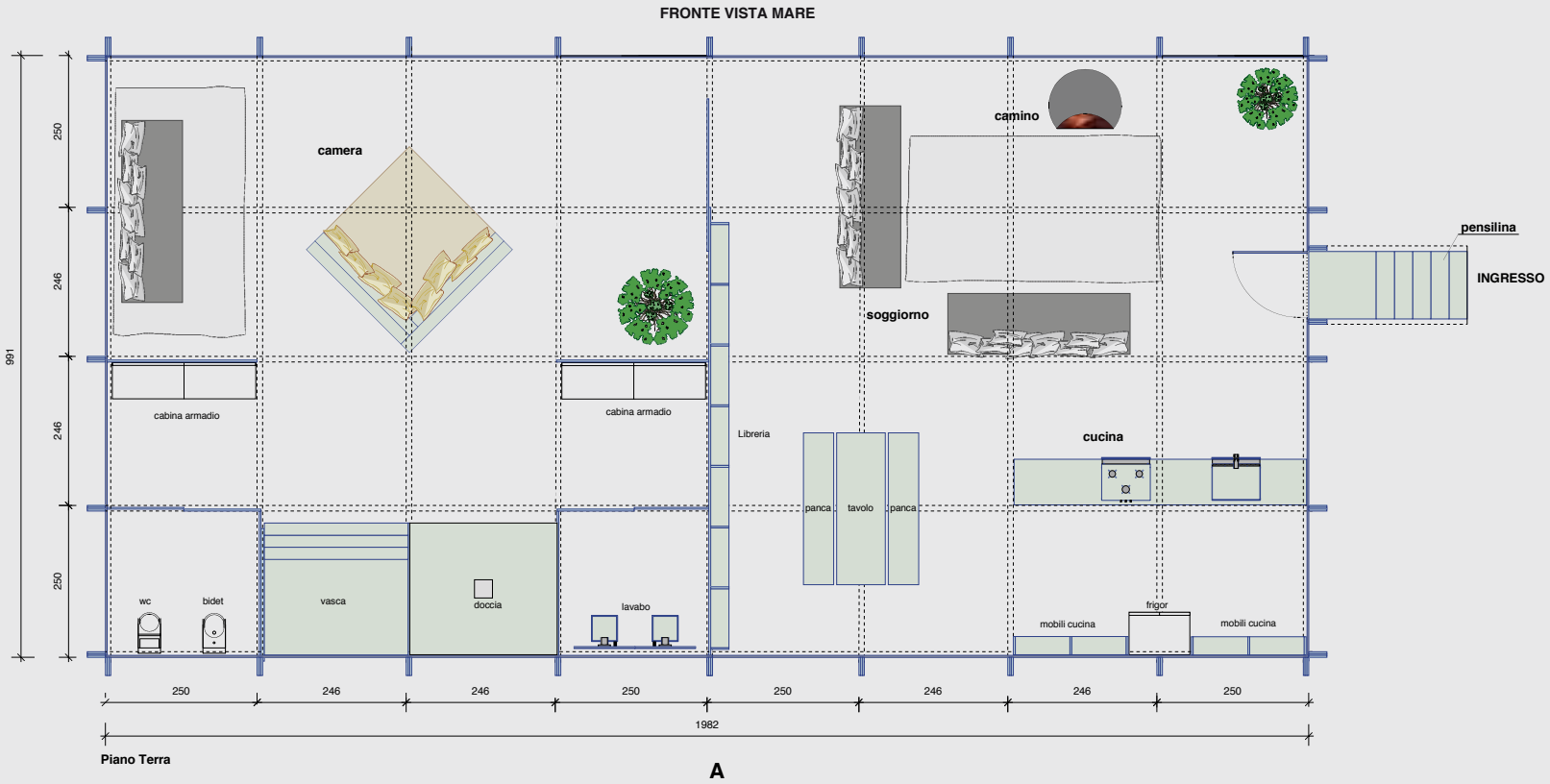
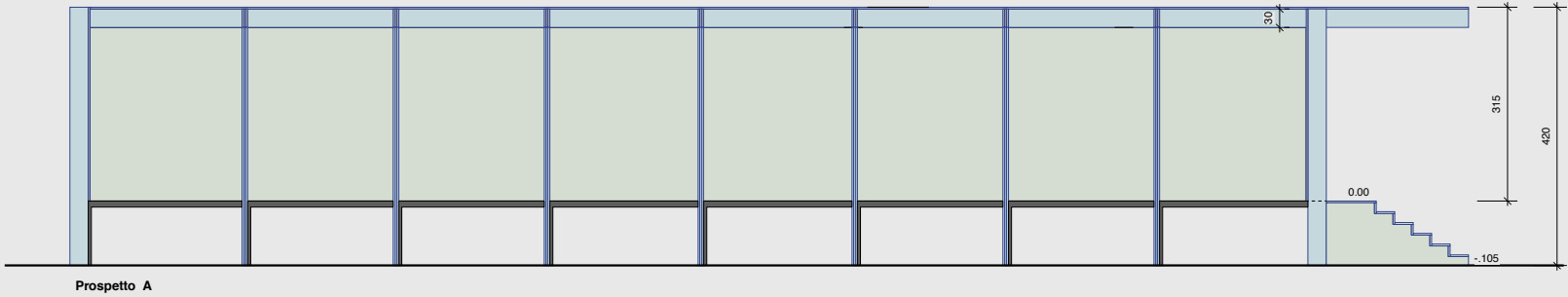


ABOUT HIS PROJECT OF THE GLASS HOUSE, CARLO SANTAMBROGIO SAYS :
" LIVING IN A FOREST DAY AND NIGHT, IN SUN AND RAIN, IN WIND, ICE AND SNOW, REALIZING THE DREAM OF MAKING THE FOREST YOUR HOUSE SO AS TO LIVE IN THE FOREST A HOUSE THAT MUST NEVER BE AN OBJECT THAT YOU CAN JUST SET DOWN ANYWHERE, BUT RATHER A PLACE OF ENCHANTMENT, OF WONDER, OF AMAZEMENT ... THREE FLOORS OF VERTICAL DEVELOPMENT, FOR THE SAKE OF ALL-ROUND VISION, GOING UP THE TRANSPARENT STAIRS MAKES YOU FEEL LIKE YOU ARE CLIMBING INTO THE TREE TOPS.

IN THE HOUSE, WHERE THE FOREST IS AT HOME, IN THE SHOWER CUBICLE WATER PATTERS ON SKIN LIKE THE DRUMMING OF THE RAIN IN SPRING, THE DORMEUSE IS SHADED BY THE WARM SUMMER SUN, THE SCENT OF AUTUMN IS IN THE MUSHROOMS ON THE TABLE, WINTER IS IN THE SUDDEN DARKNESS SURPRISING THE DAY."
..... AND NATURE IS ON STAGE IN THE THEATRE OF TRANSPARENCIES.





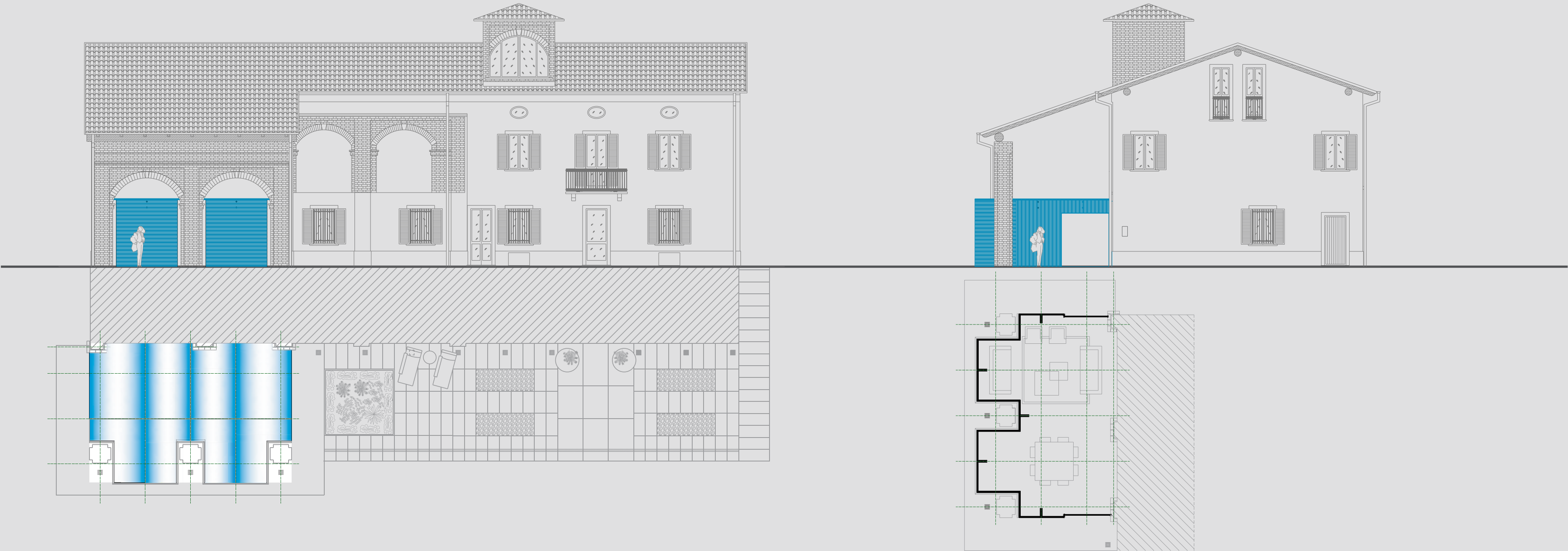


BIOCLIMATIC
GREENHOUSE,
A PROJECT THAT
TRANSFORMS
A PORTICO IN
THE MOST LIVED
ROOM OF THE
HOUSE





GLASS
CONSERVATORY





PROJECT DETAILS
REF. GA-1015
BY CARLO SANTAMBROGIO

LOCATION: SWISS

SKILL:

DELIVERY TIME FROM THE ORDER:
6 MONTHS

INSTALLATION TIME: 2 WEEKS

KIND OF GLASS USED:
STRUCTURE MADE IN EXTRACLEAR
TRANSPARENT GLASS THICK 60 mm
TEMPERED AND MULTILAYER PROCESS
WITH SGP INTERLAYER

WALL MADE IN STRUCTURAL DOUBLE GLAZING
THICK 70 mm. KW 1.0
WALKABLE ROOF IN DOUBLE GLAZING

USED GLASS QUANTITY:
720.00 sqm







A CONTRASTING GAME BETWEEN ANTIQUE AND MODERN. DESPITE THIS DIFFERENCE IN STYLE, LANGUAGE AND MATERIAL, THE RESULT OF THIS PROJECT, SIGNED BY SANTMBROGIOMILANO, IS SOMETHING AMAZING. LOCATED IN A RIDING HALL AND SURROUND BY ACRES OF GREENERY, THREE CUBES MADE EXCLUSIVELY OF GLASS INSERTED INSIDE A BRICK ARCADE, ARISE FROM THE CUSTOMER'S NEED TO BE ABLE TO TAKE ADVANTAGE OF THE OUTDOOR SPACE EVEN DURING THE WINTER PERIOD. LIGHTWEIGHT, GEOMETRIC, LINEAR. IT IS AS IF THE GLASS ARCHITECTURAL STRUCTURE WAS BORN FROM BRICKS, A SPACE THAT TELLS THE STORIES AND EMOTIONS OF THOSE WHO LIVE.









WHAT WE CAN PROTECT IS NOT JUST ART

IN THE HEART OF MILAN,
AN ANCIENT COURTYARD
HOSTS SOME HIGH-FASHION
SHOWROOMS. THE PALACE IS
CHARACTERIZED BY FRESCOED
CEILINGS OF THE NINETEENTH
CENTURY. AS THE PALACE IS VERY
OLD, SANTAMBROGIOMILANO
REALIZED A GLASS INSTALLATION
TO PROTECT PEOPLE WORKING
INTO THE PALACE IN CASE OF

CEILING COLLAPSE, WITHOUT
HIDING THE AMAZING PAINTINGS.
THE PROJECT WAS REALIZED WITH
A SPECIAL ANTI-REFLECTIVE GLASS
THANKS TO A VERY ADVANCED
TECHNOLOGY. THIS PARTICULAR
KIND OF GLASS STRONGLY REDUCES
THE LIGHT REFLECTIONS, ALLOWING
THE PERFECT PERCEPTION OF
THE ORIGINAL COLORS OF ALL
PAINTINGS.









THE GLASS WINE CELLAR

A WINE CELLAR REALIZED
EXCLUSIVELY IN EXTRA-CLEAR
GLASS WHERE DESIGN
AND FUNCTIONALITY BLEND
PERFECTLY.
BOTTLES OF WINE
SUSPENDED IN SPACE
THANKS TO A SPECIAL
ANCHORAGE SYSTEM ON
THE PILLARS GIVING A
MAGICAL TOUCH TO THE
SURROUNDING SPACE.





PROJECT DETAILS
REF. GF-2115
BY CARLO SANTAMBROGIO

LOCATION:
MONFERRATO - ITALY

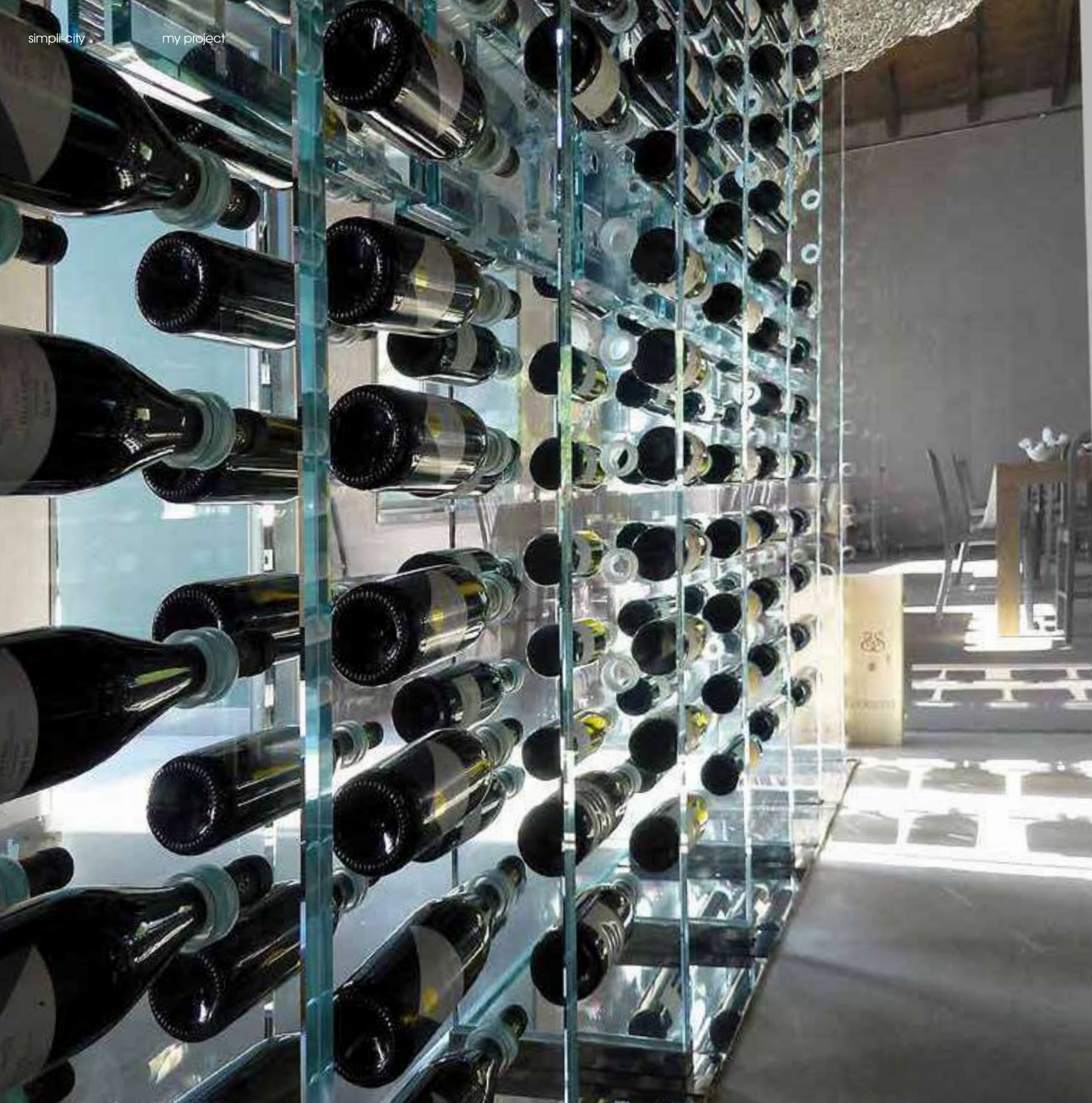
SKILL:

DELIVERY TIME FROM THE ORDER:
2 MONTHS

INSTALLATION TIME:
5 DAYS

KIND OF GLASS USED:
EXTRACLEAR TRANSPARENT
GLASS TEMPERED AND LAMINATED

QUANTITY OF GLASS USED:
105.00 sqm





LIVING TRANSPARENTLY

A TRANSPARENT PENTHOUSE
WITHOUT ANY VISIBLE
FRAME. THE BEDROOM
IS A TRANSPARENT GLASS
CUBE WITH AN INTEGRATED
BATHROOM. A SPECIAL SYSTEM
OF CURTAINS, TURNS THE
ROOM DARK.
A BIG GLASS SOFA BECOMES
THE PROTAGONIST OF THE
LIVING ROOM.





PROJECT DETAILS
REF. GF-2045
BY CARLO SANTAMBROGIO

IN COLLABORATION WITH
DIONISIS SOTOVIKIS ARCHITECT

LOCATION:
ATHENS -GREECE

SKILL:

DELIVERY TIME FROM THE ORDER:
3 MONTHS

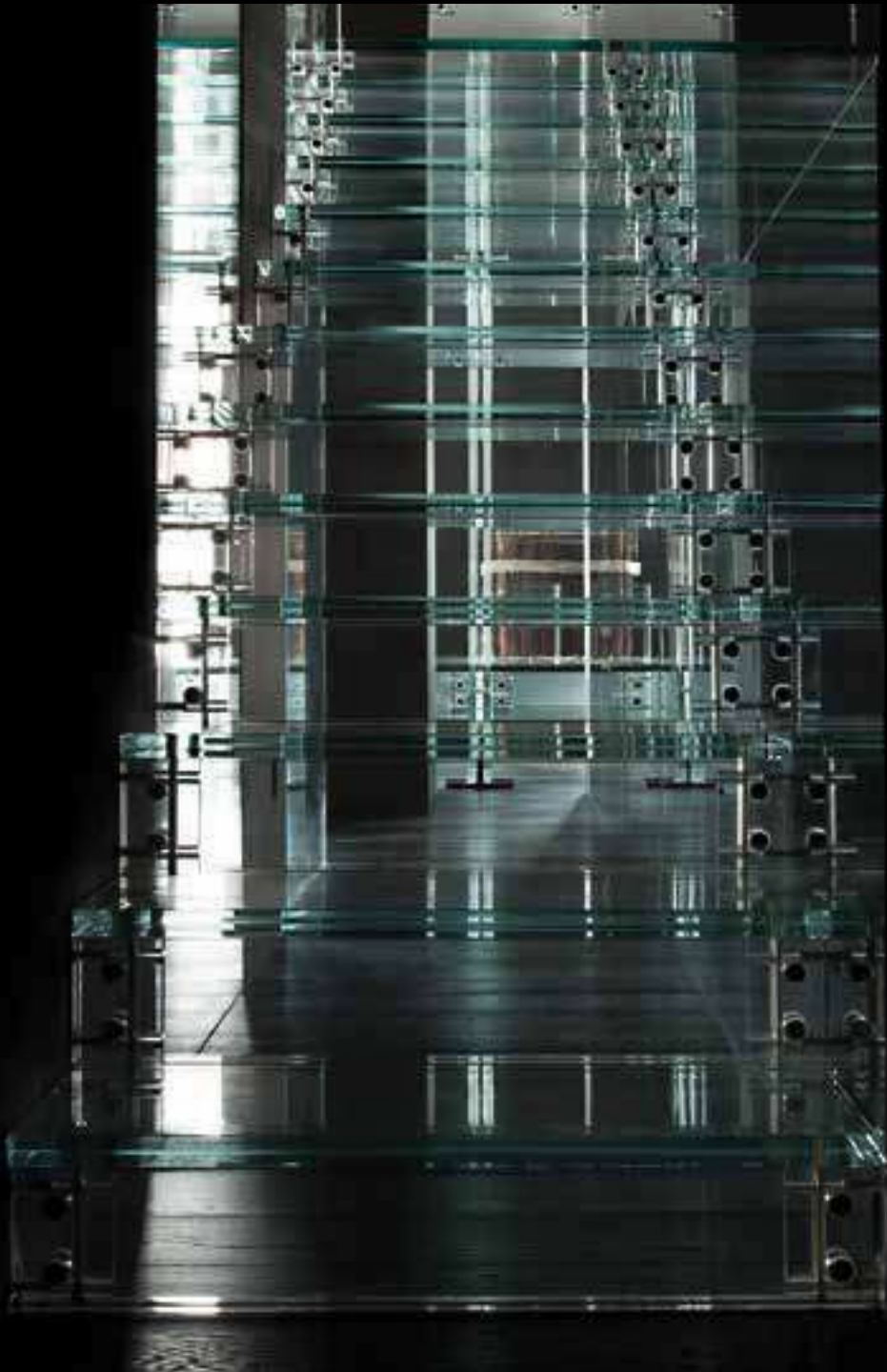
INSTALLATION TIME:
2 WEEKS

KIND OF GLASS USED:
EXTRACLEAR TRANSPARENT GLASS
TEMPERED AND LAMINATED.

GLASS CHIMNEYS MADE IN EXTRACLEAR
TRANSPARENT GLASS

USED GLASS QUANTITY:
300 sqm





COOKING
WITH
TRANSPARENCY.
WE THOUGHT
ABOUT
GREAT ITALIAN
CHEFS.

RED MEAT, GREEN LEAVES
AND YELLOW
LEMON BRIGHTEN ITS
TRANSPARENCIES OF THE
THOUSAND REFLECTIONS.
FROM THE PERFECT
SYNTHESIS BETWEEN DESIGN
AND FUNCTIONALITY THIS
KITCHEN IS BORN.

ABSOLUTE PROTAGONIST IS
THE GLASS, THAT ALLOWS TO
LIVE IN TRANSPARENCY, A
NEW CONCEPT OF KITCHEN.





PROJECT DETAILS
REF. GF-1975
BY CARLO SANTAMBROGIO ARCHITECT

LOCATION:
SABAUDIA - ITALY

SKILL:
**
DELIVERY TIME FROM THE ORDER:
2 MONTHS

USED GLASS QUANTITY:
95.00 sqm

CABRIOLET RESTAURANT

A LARGE GLASS PERGOLA
SUSPENDED AMONG THE
BUILDINGS OF A 600 SQUARE
METRES COURTYARD, WITH
WALLS COVERED BY VERTICAL
GARDENS ALL AROUND.

THE PERGOLA IS
CHARACTERIZED BY
INNOVATIVE LUMINOUS
EFFECTS WITH DIFFUSED
LIGHT ALONG THE BEAMS.
THIS IS A PARTICULAR USE
OF LIGHT BECOMING THE
MAIN ELEMENT OF THE
TRANSPARENT STRUCTURE.

MINIMALISM AND VERSATILITY
ARE COMBINED WITH THE
STRENGTH OF THE MATERIAL
USED.

THE STRUCTURE AND ITS
COVER CAN BE REALIZED
IN DIFFERENT COLORS,
CREATING A WIDE RANGE
OF PERSONALIZED
SOLUTIONS.







LIGHTING CONTROL SYSTEM, HIGH SAFETY.

A SET OF BEARING
ELEMENTS WHICH ARE THE
BACKBONE OF A BUILDING,
MADE ENTIRELY OF
TEMPERED AND LAMINATED
GLASS AND A CONNECTION
SYSTEM (PATENTED BY OUR
COMPANY), THAT ALLOWS
YOU TO ASSEMBLE THE
VARIOUS PLATES TO A VERY
RIGOROSO.
SANTAMBROGIOMILANO
CARTESIAN SCHEME IS ABLE
TO DESIGN, PRODUCE AND

INSTALL GLASS EXCLUSIVE
FACILITIES IN LINE WITH
A TRANSPARENT PLASTIC
LIFESTYLE.
THANKS TO HIS
"NATURE" TRANSPARENT,
SANTAMBROGIOMILANO
STRUCTURE CAN BE INSERTED
IN EVERY AREA WITHOUT
INTERFERING VISUALLY
WITH WHAT SURROUNDS
IT, ENTERING IN PERFECT
HARMONY WITH EVERY STYLE.





PROJECT DETAILS
REF. GA-1055
BY CARLO SANTAMBROGIO ARCHITECT
IN COLLABORATION WITH
TRIPLAN STUDIO

LOCATION:
SINGAPORE

SKILL:

DELIVERY TIME FROM THE ORDER:
2 MONTHS

INSTALLATION TIME:
1 WEEK

KIND OF GLASS USED:
EXTRACLEAR TRANSPARENT CURVED
GLASS TEMPERED AND LAMINATED.

USED GLASS QUANTITY:
135.00 sqm



SANTAMBROGIO | MILANO LA TERRAZZA LIVING OUTDOOR.

“ABOVE THE ROOFS OF MILAN, ON A LARGE ROOF-TOP, A TOTALLY GLASSFILLED TERRACE IS CREATED.”
ABSOLUTE PROTAGONIST IS GLASS, NOT ONLY AS A DECORATIVE BUT ALSO STRUCTURAL ELEMENT. UNDER HIS FEET IS A FLOOR OF WHITE GLASS-COLORED GLASS PLATES, DESIGNED AND THOUGHTFULLY DESIGNED FOR THIS OUTDOOR LOCATION, ABOVE THE HEAD OF THE SKY OF MILAN.

IN THE CENTER OF THE TERRACE IS A 8 METER PERGOLA, A STRUCTURAL ELEMENT MADE UP OF TRANSPARENT GLASS PILLARS AND BEAMS THAT WAS PUT INTO PRODUCTION ON THE OCCASION OF THIS PROJECT. THANKS TO THE USE OF GLASS SHEETS ONLY FOR THE STRUCTURAL PART, EVERYTHING THAT CAN DISTRACT THE EYE FROM THE ADMIRATION OF THIS EXTREMELY ELEGANT PRODUCT IS ELIMINATED.

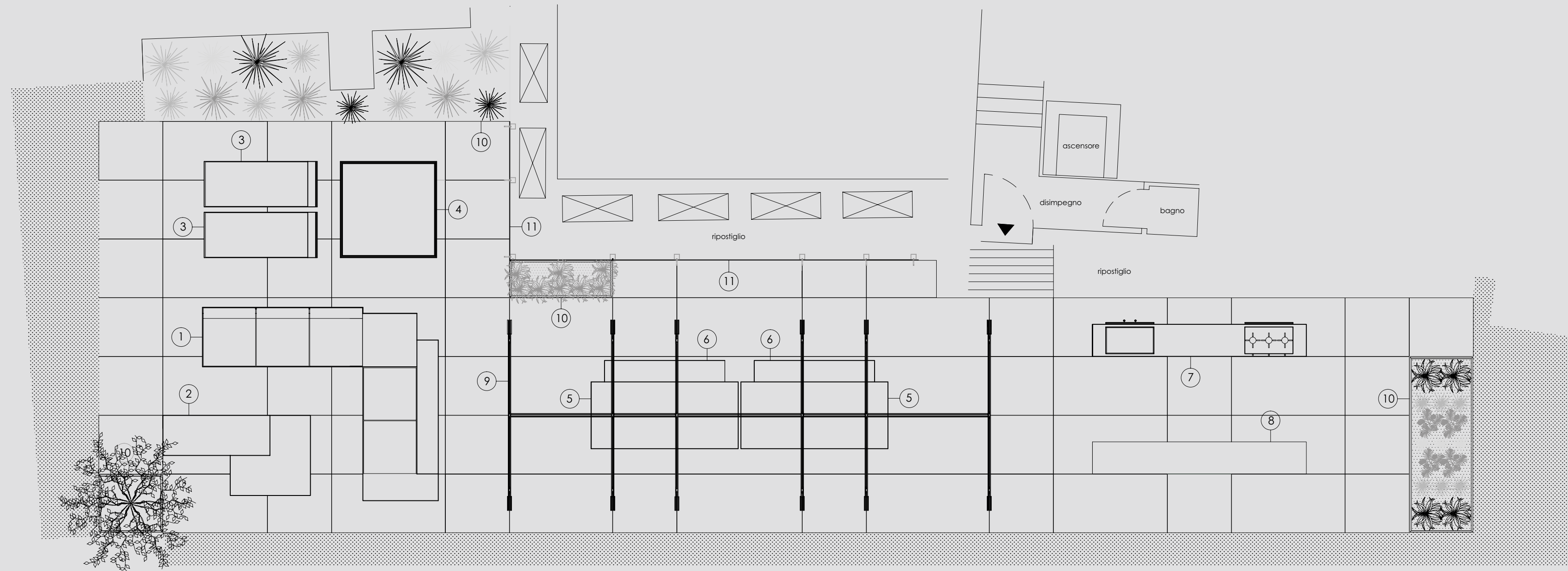
ALMOST INVISIBLE DURING THE DAY, AT NIGHT, THE STRUCTURE COMES TO LIFE THANKS TO LED STRIPS POSITIONED AT THE BASE OF IT ALLOWING LIGHT TO RUN ALONG THE GLASS, FINALLY OPENING TO THE SKY. SAMBROGIOMILANO LA TERRAZZA, A UNIQUE AND INIMITABLE PLACE DESIGNED UNDER THE SIGN OF TRANSPARENCY.





LA TERRAZZA

VIA ARCO 1 MILANO





PROJECT DETAILS
REF. GA-1250
BY CARLO SANTAMBROGIO ARCHITECT
IN COLLABORATION WITH
ENNIO AROSIO

LOCATION:
MILANO - ITALY

SKILL:

DELIVERY TIME FROM THE ORDER:
3 MONTHS

INSTALLATION TIME:
2.5 WEEKS

KIND OF GLASS USED:
STRUCTURE MADE IN EXTRACLEAR
TRANSPARENT GLASS THICK 50 MM TEMPERED
AND MULTILAYER PROCESS WITH
SGP INTERLAYER

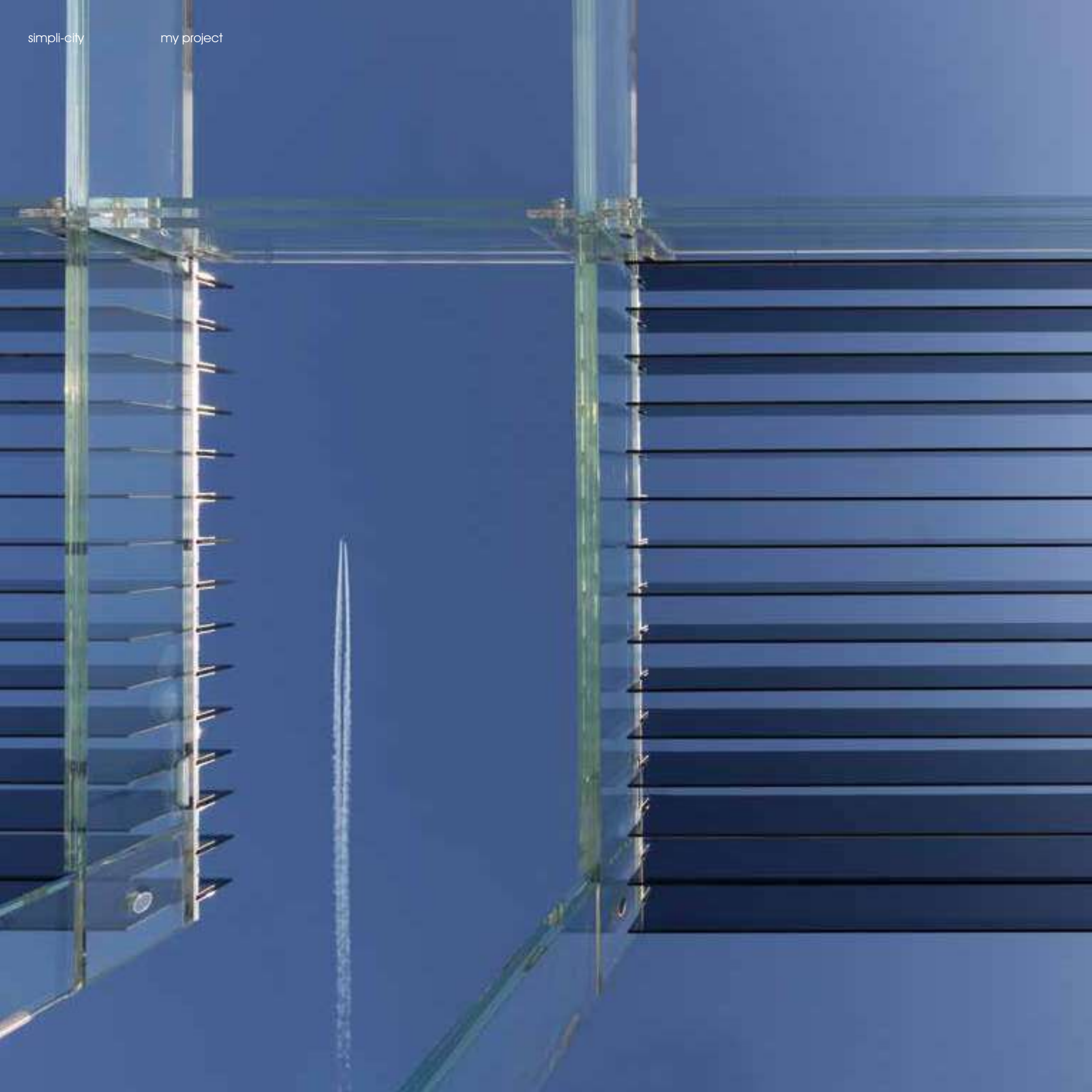
FLOOR MADE IN BACKPAINTED ANTISLIP GLASS,
LAMINATED WITH ALUMINIUM HONEYCOMB

FURNITURE MADE IN EXTRACLEAR
TRANSPARENT GLASS THICK 15+15 mm
TEMPERED AND LAMINATED

USED GLASS QUANTITY:
650.00 sqm











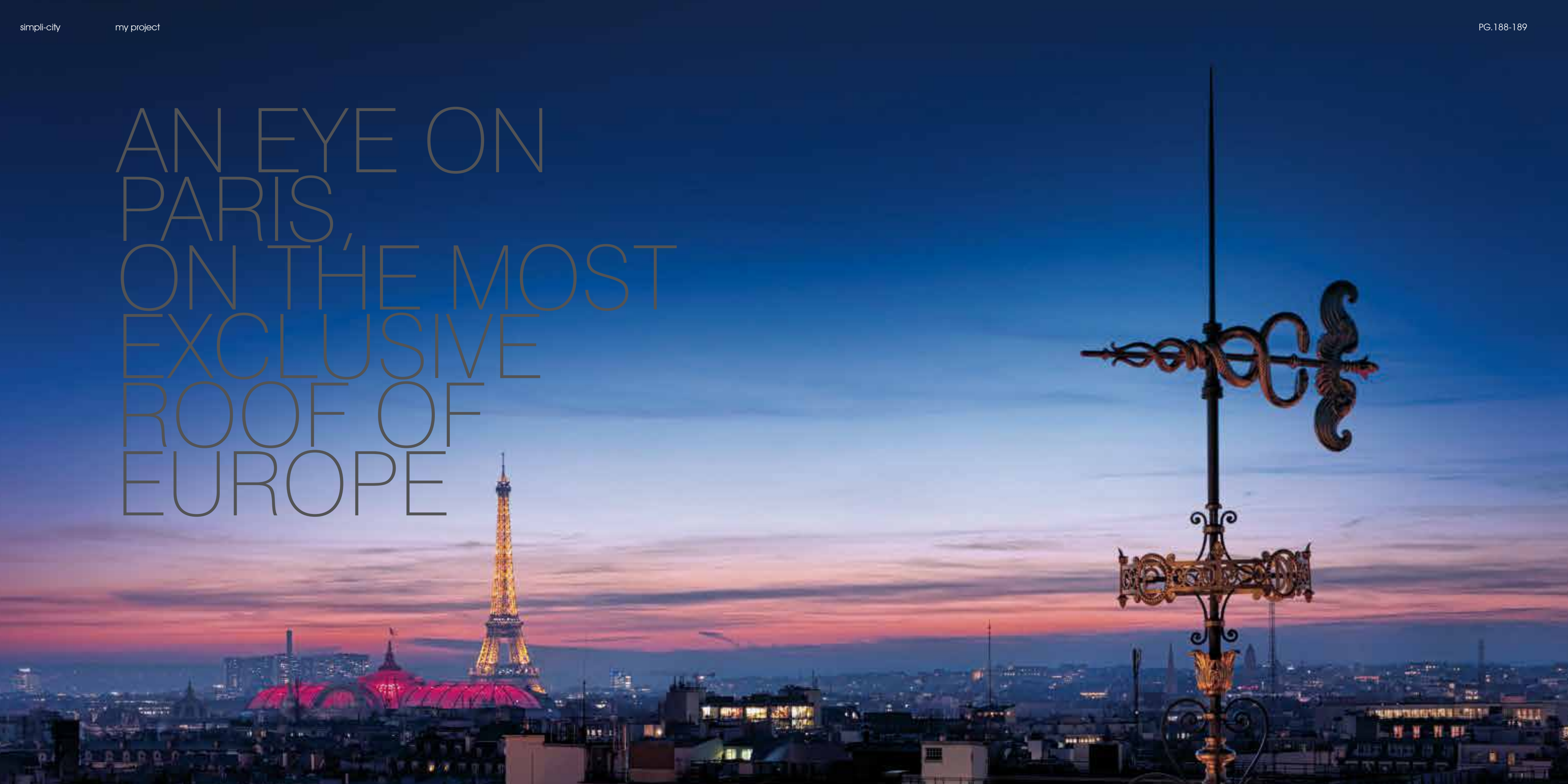
santambrogio milano
LA TERRAZZA



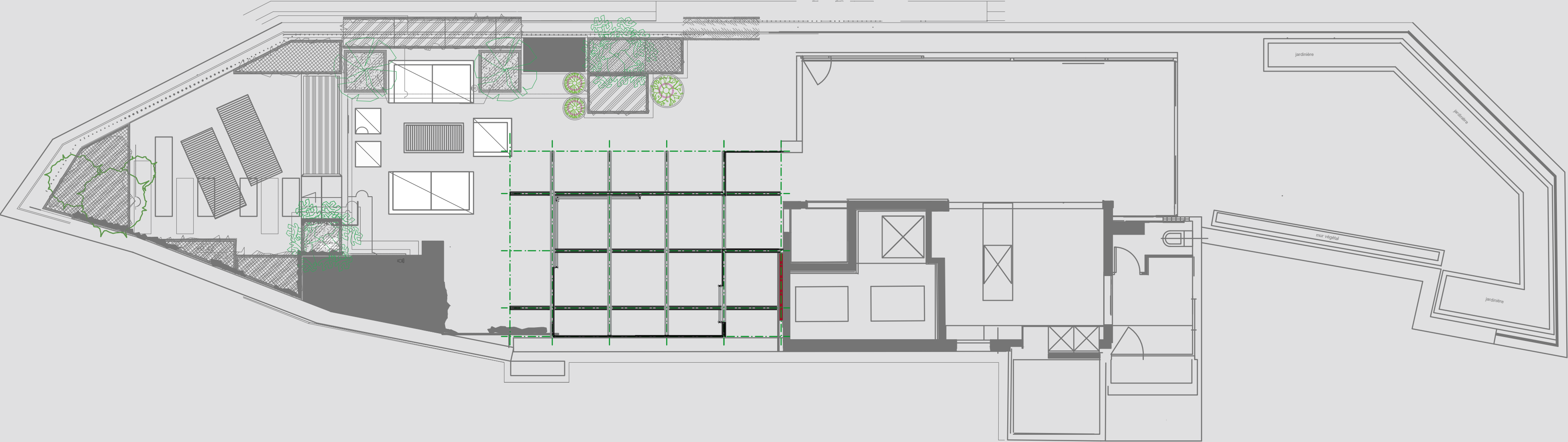




AN EYE ON PARIS, ON THE MOST EXCLUSIVE ROOF OF EUROPE



ROOF ON
PARIS





PROJECT DETAILS
REF. GA-1005
BY CARLO SANTAMBROGIO ARCHITECT

LOCATION:
PARIS - FRANCE

SKILL:

DELIVERY TIME FROM THE ORDER:
6 MONTHS

INSTALLATION TIME:
2 WEEKS

KIND OF GLASS USED:
STRUCTURE MADE IN EXTRACLEAR TRANSPARENT GLASS
THICK 60 MM TEMPERED AND
MULTILAYER PROCESS WITH SGP INTERLAYER

WALL MADE IN STRUCTURAL DOUBLE GLAZING
THICK 70 mm. KW 1.0
WALKABLE ROOF IN DOUBLE GLAZING

USED GLASS QUANTITY:
675.00 sqm





A 360 DEGREE IMMERSION IN TRANSPARENCY.
ABOVE THE ROOFS OF PARIS RISES A COMPLETELY TRANSPARENT GLASS CUBE, CLEAR JUST LIKE THE PARIS SKY.
THANKS TO THE USE OF THE SPECIAL PATENTED JOINT SYSTEM BY SANTAMBROGIO | MILANO IT WAS POSSIBLE TO CREATE ITS OWN 100% TRANSPARENT GLASS HOUSE WITHOUT ANY TYPE OF STEEL STRUCTURES OR PROFILES.
EQUIPPED WITH A CURTAIN SYSTEM TO REPAIR FROM HOT DAYS AND AN AERATION SYSTEM, THIS GLASS CUBE IS A SPACE TO LIVE IN ANY SEASON AND SITUATION.
A REAL HOME WHERE YOU CAN STUDY, WORK OR ENJOY A GOOD CHOCOLATE UNDER THE SKY ILLUMINATED BY THE CITY LIGHTS AND THE EFFEIL TOWER JUST A FEW METERS AWAY.



RELAX IN THE MIDDLE OF THE MOUNTAINS



GLASS CONSERVATORY IS A PERFECT SOLUTION TO INCREASE THE AVAILABLE SPACE IN EVERY LOCATIONS. THANKS TO THE USE OF A SPECIFIC TYPE OF GLASS AND A SPECIAL AERATION SYSTEM SPECIALLY DESIGNED, IS POSSIBLE TO LIVE THIS SPACE IN ANY SEASON OR CLIMATIC SITUATION. THE LIGHTNESS AND TRANSPARENCY OF THE GLASS MAKES THE EVANESCENT SPACE, LEAVING "TALK" THE SURROUNDING ENVIRONMENT.

INSIDE THE GLASS CONSERVATORY IT IS EXTREMELY BRIGHT, IN TUNE AND IN CONTINUOUS TRANSFORMATION WITH THE SURROUNDING NATURE; EVERY HOUR OF THE DAY AND TIME OF THE YEAR THE ENVIRONMENT CHANGES ITS CHARACTERISTICS GIVING ALWAYS DIFFERENT SCENARIOS.





REF. GA- 2012
BY CARLO SANTAMBROGIO

SKILL:

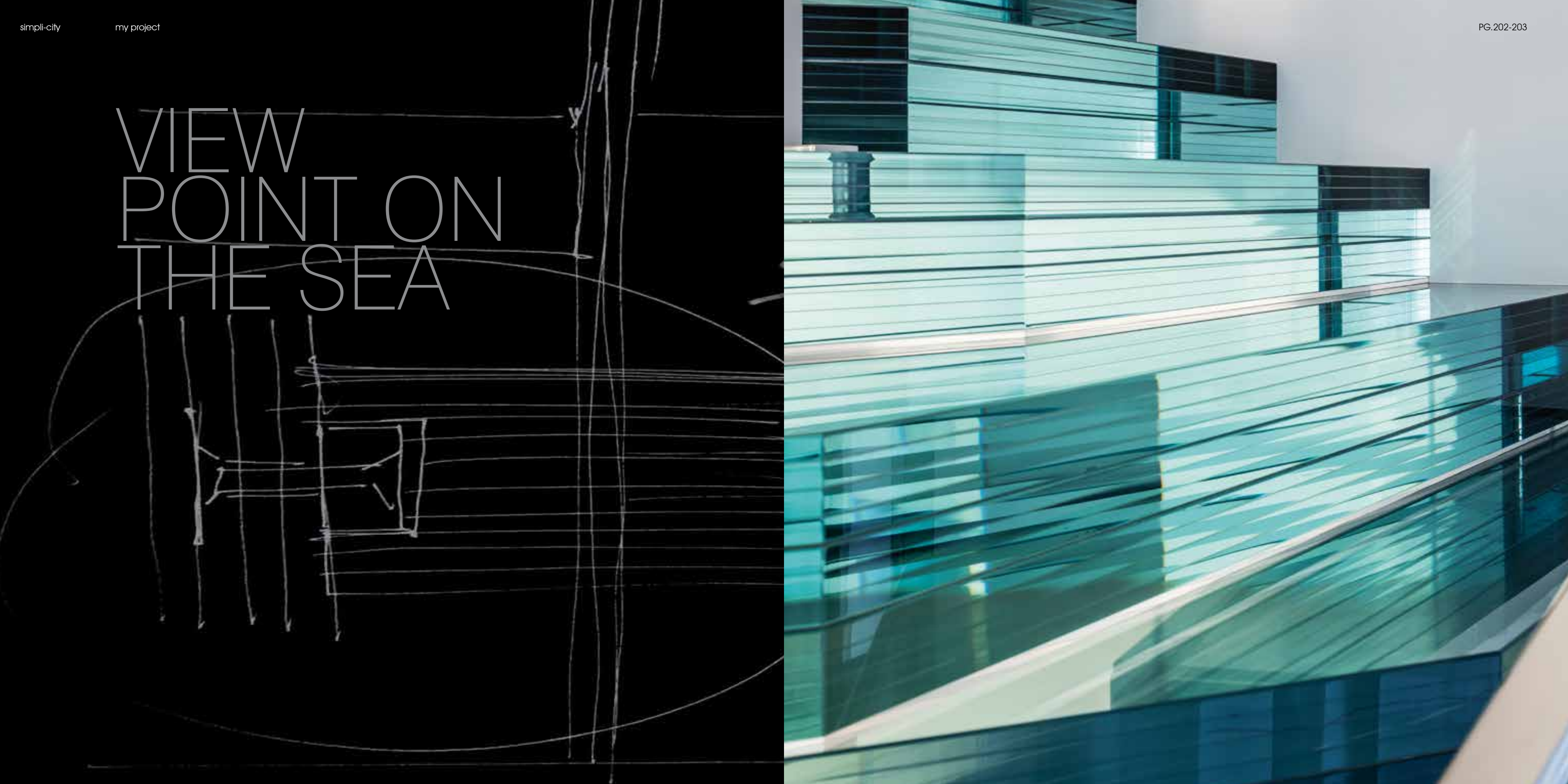
LOCATION:
COURCHEVEL - FRANCE

STATUS:
PROJECT DEVELOPMENT



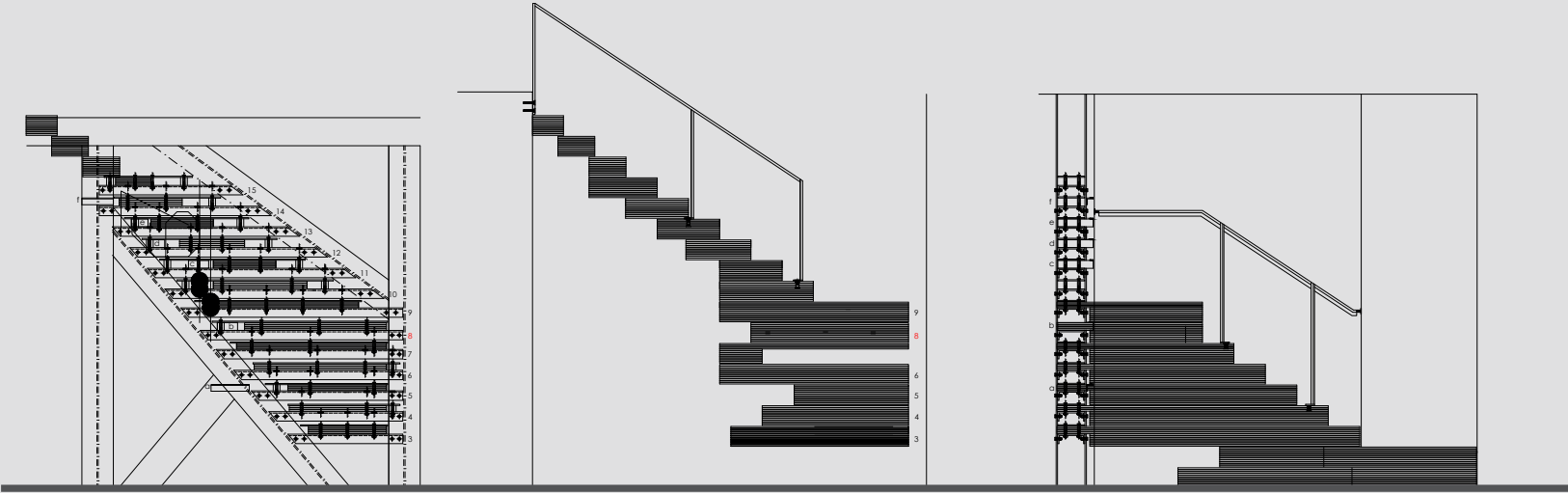
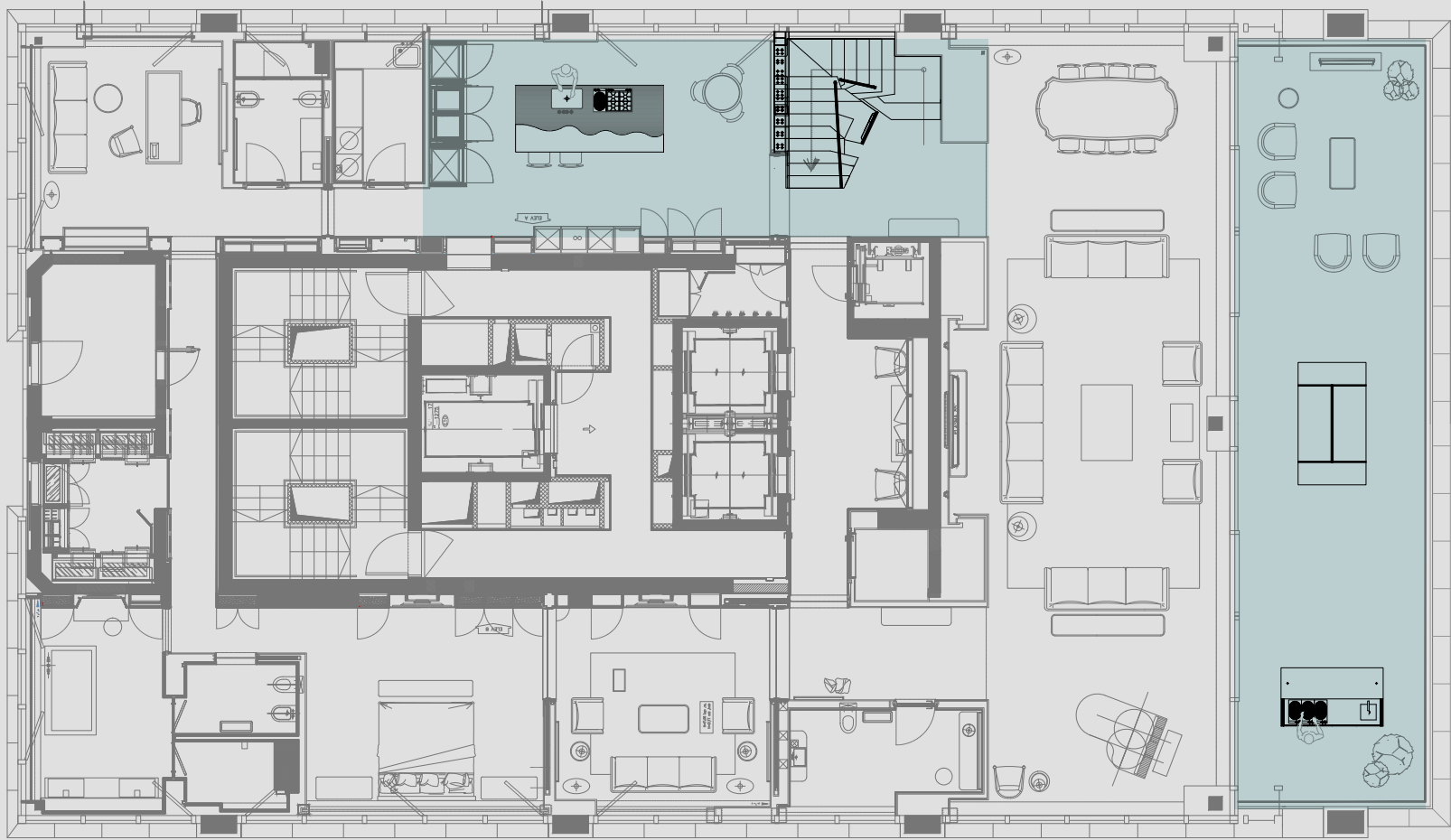
KIND OF GLASS USED:
STRUCTURE MADE IN EXTRACLEAR TRANSPARENT GLASS
THICK 60 MM TEMPERED AND
MULTILAYER PROCESS WITH SGP INTERLAYER
WALL MADE IN STRUCTURAL DOUBLE GLAZING THICK
70 MM. KW 1.0
ROOF MADE IN EATED GLASS (THE SNOW MELTS)
USED GLASS QUANTITY: 750.00 SQM

VIEW POINT ON THE SEA

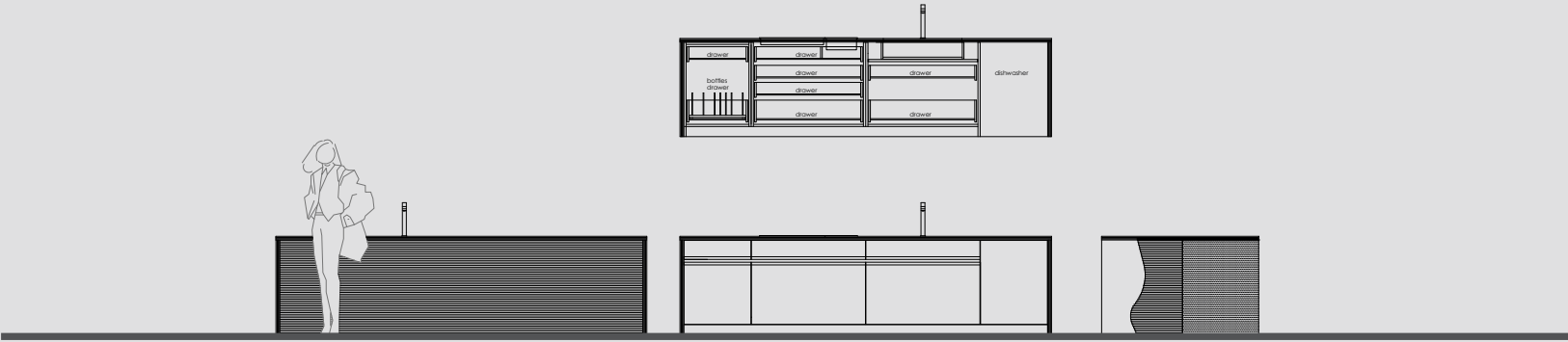




SCULTURE
DI CASA



SCALA IN VETRO MASSELLO



CUCINA CON VETRO INTAGLIATO



PROJECT DETAILS
REF. GA-1005
BY CARLO SANTAMBROGIO ARCHITECT
IN COLLABORATION WITH
IRMA ORESTEIN ARCHITECT

LOCATION:
TEL AVIV - ISRAEL

SKILL:

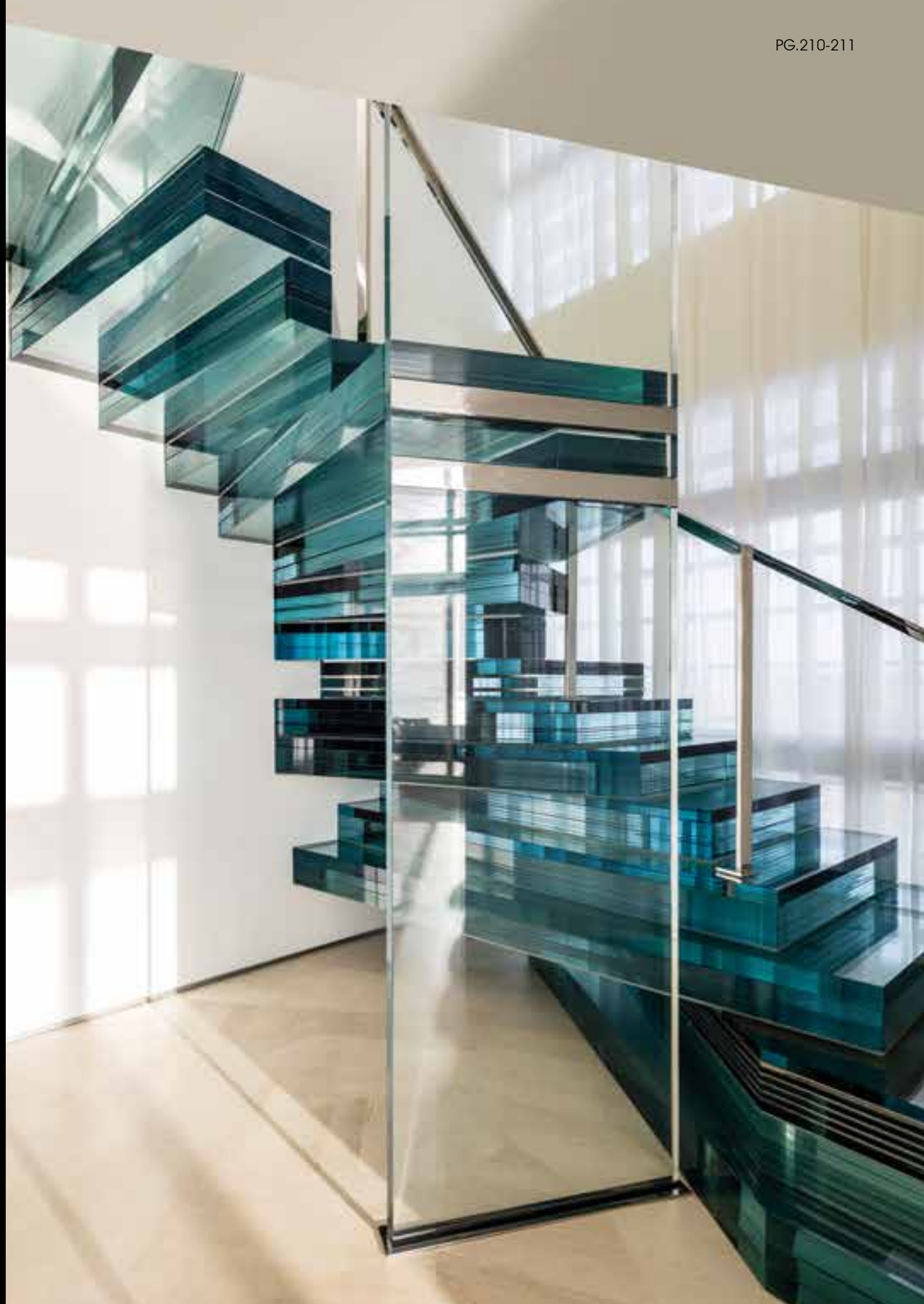
DELIVERY TIME FROM THE ORDER:
6 MONTHS

INSTALLATION TIME:
2 WEEKS

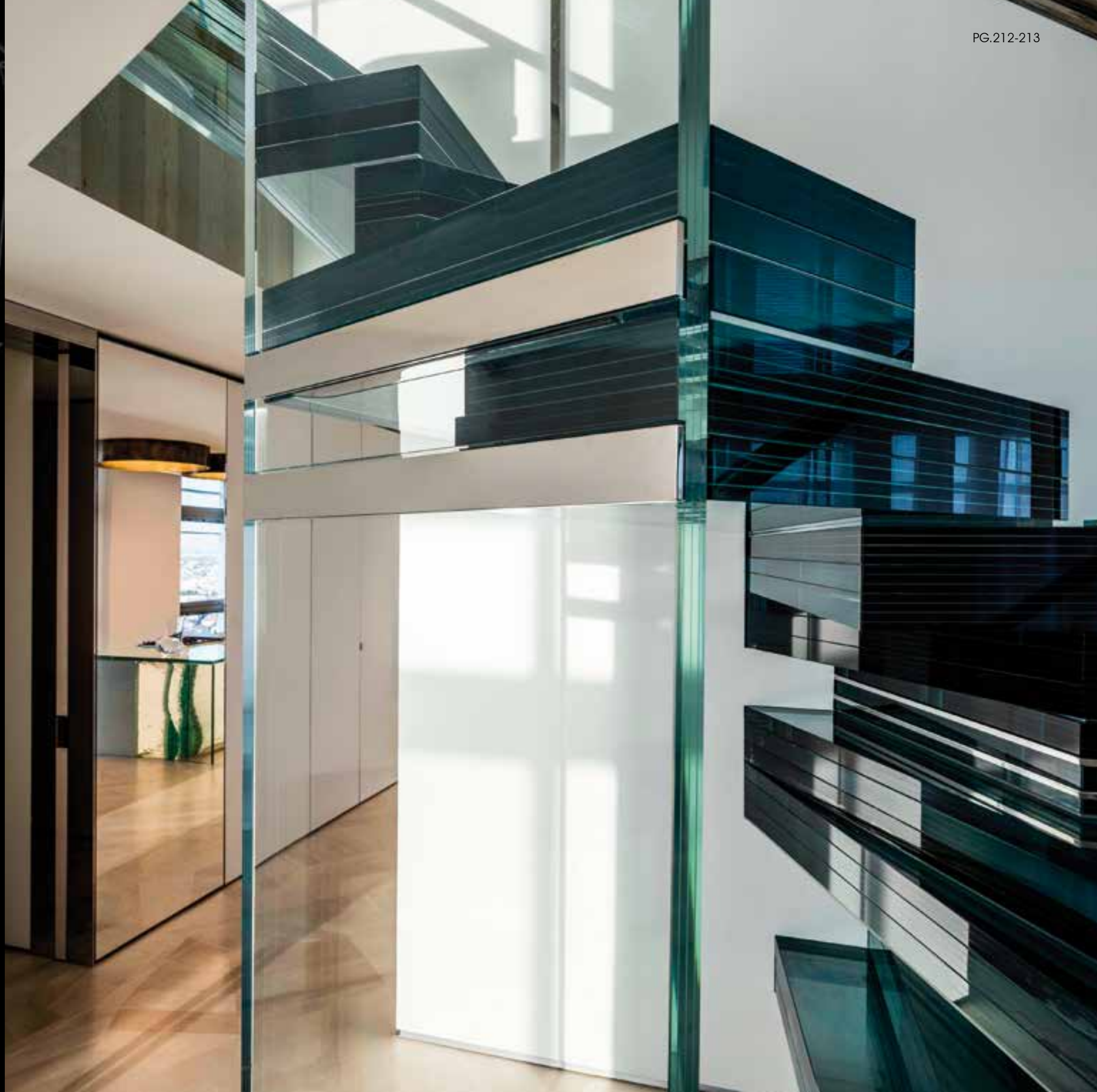
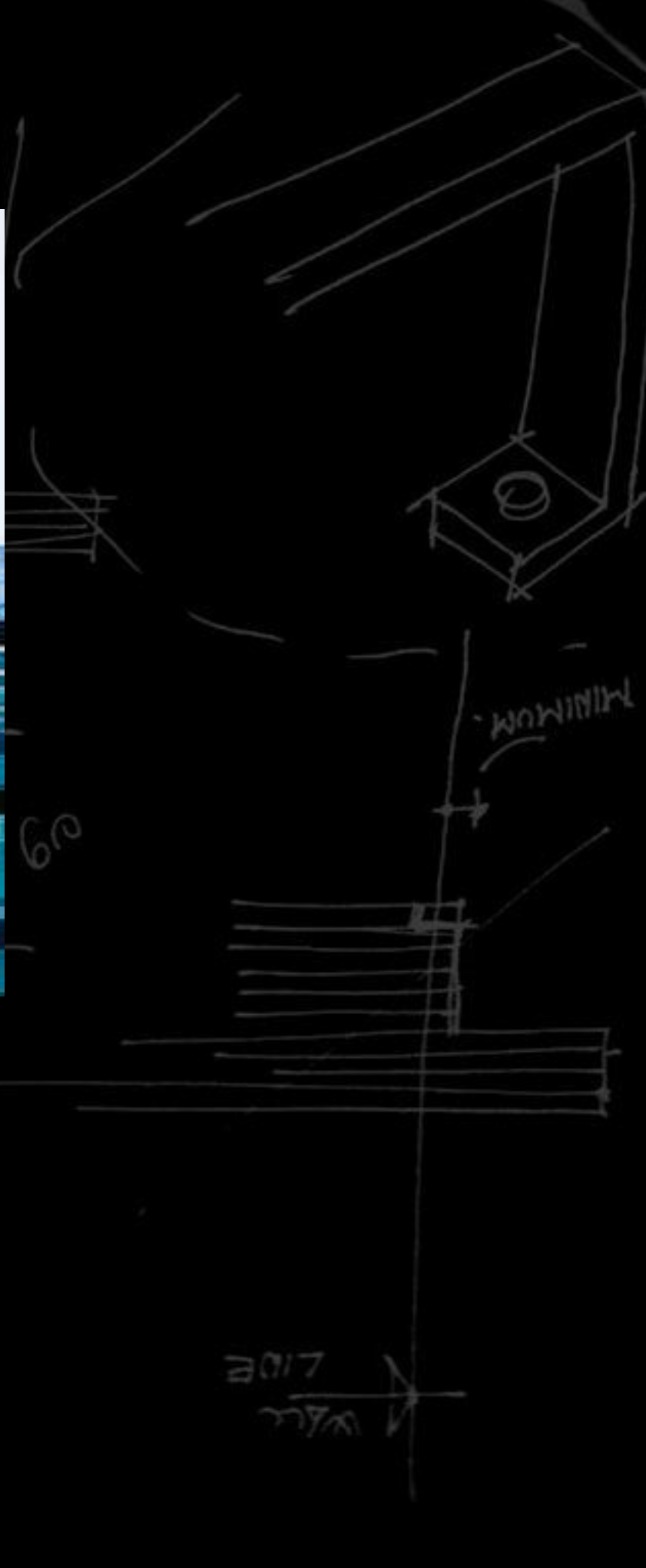
KIND OF GLASS USED:
STEPS MADE IN EXTRACLEAR TRANSPARENT GLASS
THICK 180 mm
TEMPERED AND MULTILAYER PROCESS
WITH SGP INTERLAYER

KITCHEN SCULPTURE MADE IN 82 LAYERS
OF GLASS THICK 10 mm EACH CUT BY HAND

USED GLASS QUANTITY:
720.00 sqm



IN ONE OF THE MOST EXPENSIVE AND LUXURIOUS PENTHOUSES IN TEL AVIV, THE FIRST STAIRCASE MADE ENTIRELY OF SOLID GLASS. DESIGNED AND REALIZED NOT AS A NORMAL SCALE BUT WELL AS A TRUE SCULPTURE. NINETEEN STEPS EACH ONE DIFFERENT FROM THE OTHER, MADE OF 11 LAYERS OF GLASS, FOR A TOTAL OF 8,000 KG. A UNIQUE, UNPRECEDENTED DESIGN OBJECT THAT LEAVES ANYONE SPEECHLESS WITHOUT ANYONE WATCHING IT. THE THICKNESS OF THE GLASS THAT TAKES ON DIFFERENT COLORS DEPENDING ON THE LIGHT THAT CROSSES IT TOTALLY IN CONTRAST WITH THE PERFECT TRANSPARENCY OF THE SURFACE.



COOKING ON THE DESERT

COOKING ON A ONE OFF
GLASS KITCHEN SCULPTURE OR
PLAYING PING-PONG ON A
UNIQUE OUTDOOR GLASS
TABLE. THE KITCHEN SCULPTURE
IS MADE OF 85 LAYERS OF
GLASS IN DIFFERENT SHAPES
SO AS TO CREATE THE EFFECT
OF ROCK FORMATIONS
IN THE DESERT.
THE TABLE IS A REGULATION
SIZE PINP-PONG TABLE.
PROJECT IN COLLABORATION
WITH ARCHITECT IRMA
ORENSTEIN.

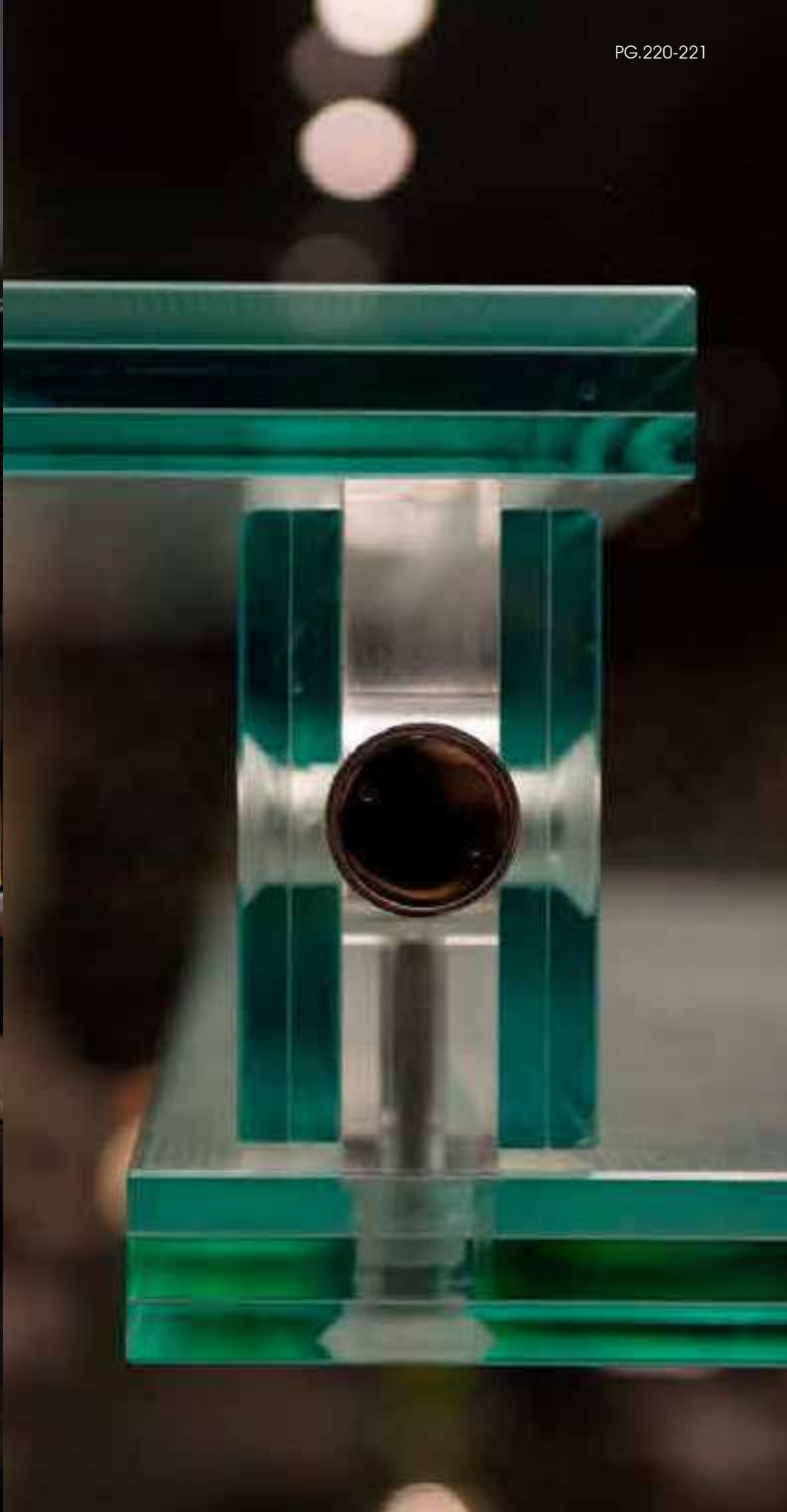




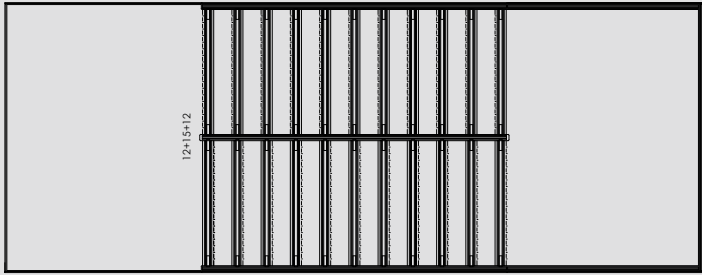
www.italianmagazine.it

COME
UP
A BANK
WHERE
TRANSPARENCY
IS
HOME





COME UP
A BANK





PROJECT DETAILS
REF. GA-1290
BY CARLO SANTAMBROGIO ARCHITECT
IN COLLABORATION WITH
ARCHINOW

LOCATION:
REPUBLIC OF SAN MARINO

SKILL:

DELIVERY TIME FROM THE ORDER:
6 MONTHS

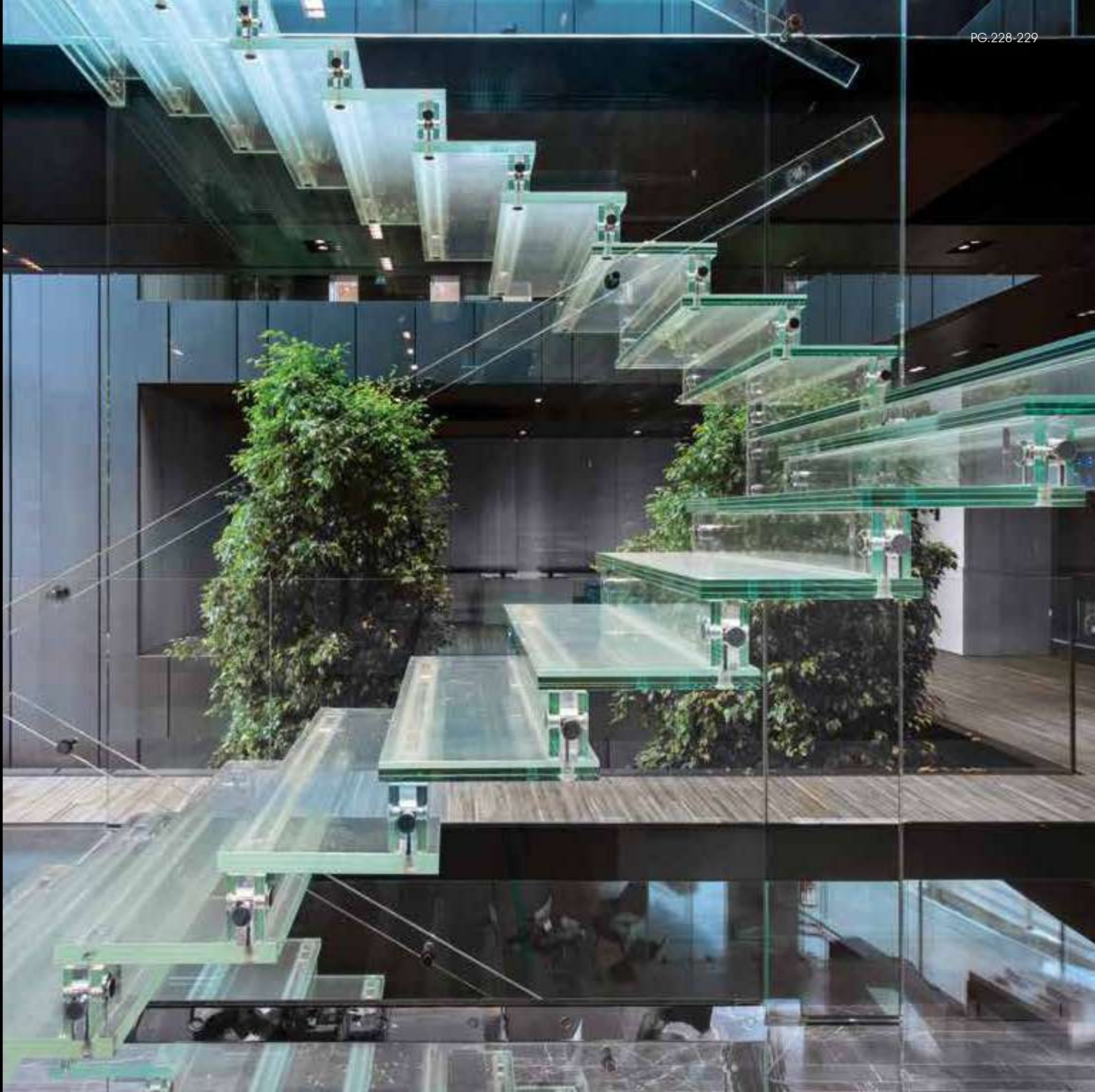
INSTALLATION TIME:
3 WEEKS

KIND OF GLASS USED:
STRUCTURE MADE IN EXTRACLEAR TRANSPARENT GLASS
THICK 50 MM TEMPERED AND MULTILAYER PROCESS
WITH SGP INTERLAYER.
CALCULATED TO SUPPORT 400 kgs/sqm

USED GLASS QUANTITY:
950.00 sqm



A STAIR MADE MADE
WITH LIGHT, GLASS
AND TRANSPARENCIES.
DEVELOPED VERTICALLY ON
THREE DIFFERENT LEVELS,
TWO RAMPS, WITH A TOTAL
OF 50 STEPS ENCLOSED
INSIDE A GLASS BOX RISING
TO THE SKY.
EACH STEP HAS A DIFFERENT
PERSPECTIVE ABOVE
OR BELOW YOU. MADE
ENTIRELY IN TEMPERED
AND LAMINATED GLASS,
ASSEMBLED THROUGH THE
ASSEMBLY SYSTEM PATENT BY
SANTAMBROGIOMILANO,
THE STAIR BECOMES THE
ABSOLUTE PROTAGONIST OF
THE SURROUNDING SPACE.







INDIAN ATMOSPHERE. CARLO DESIGNS WITH COMPLETE TRANS PARENCY.

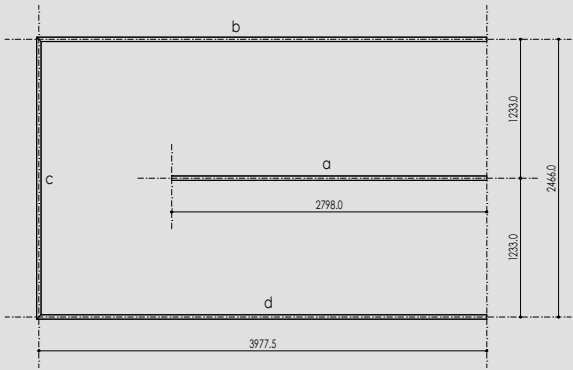
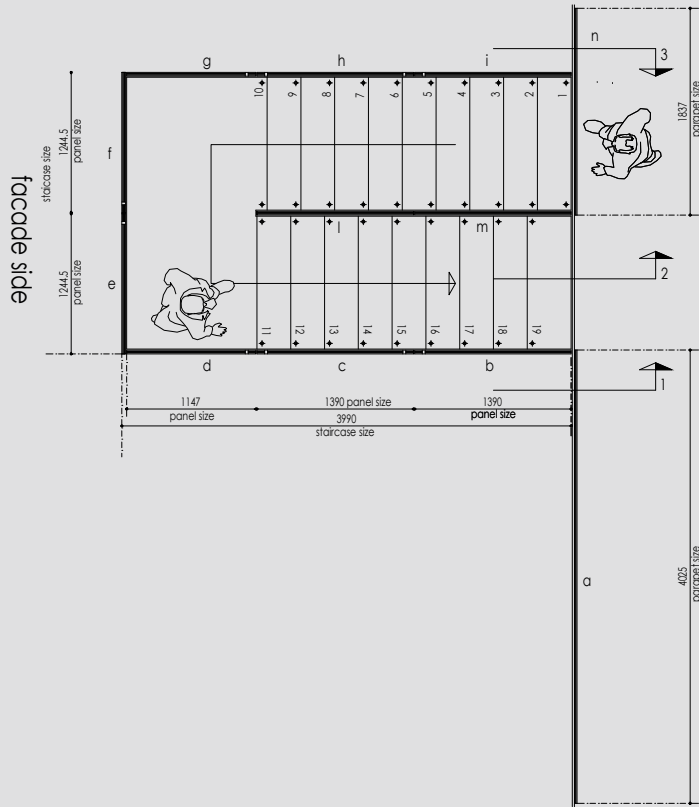
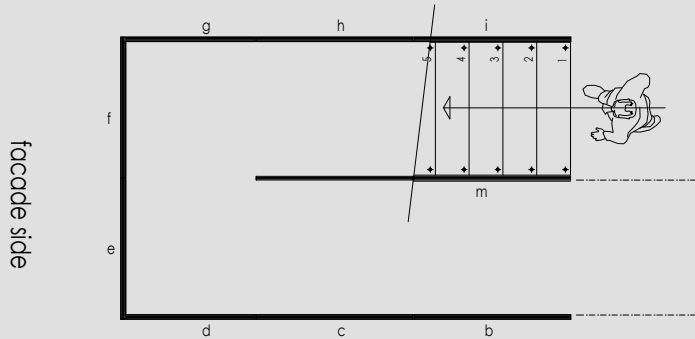
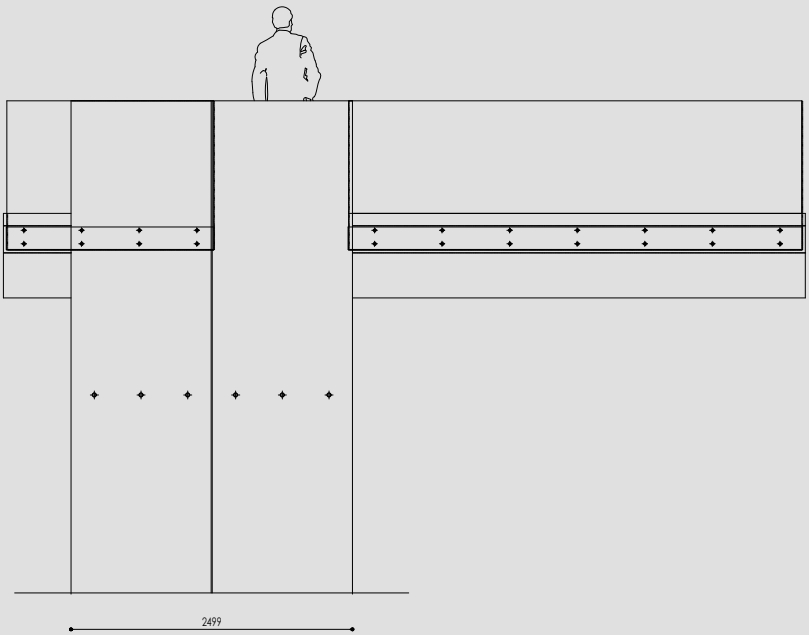
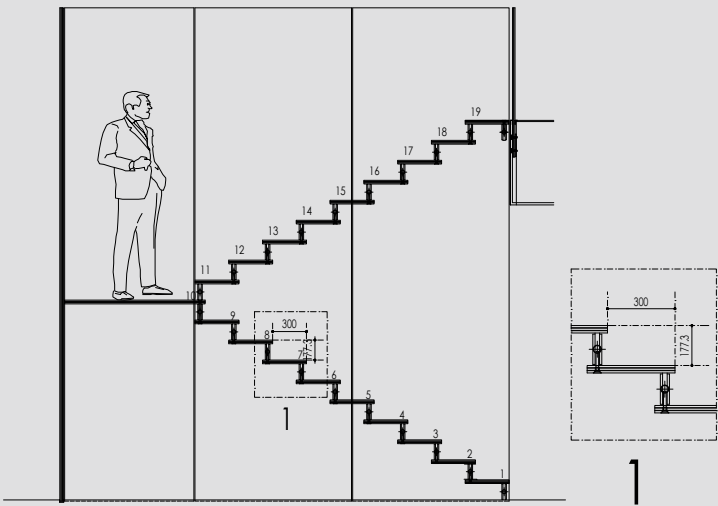
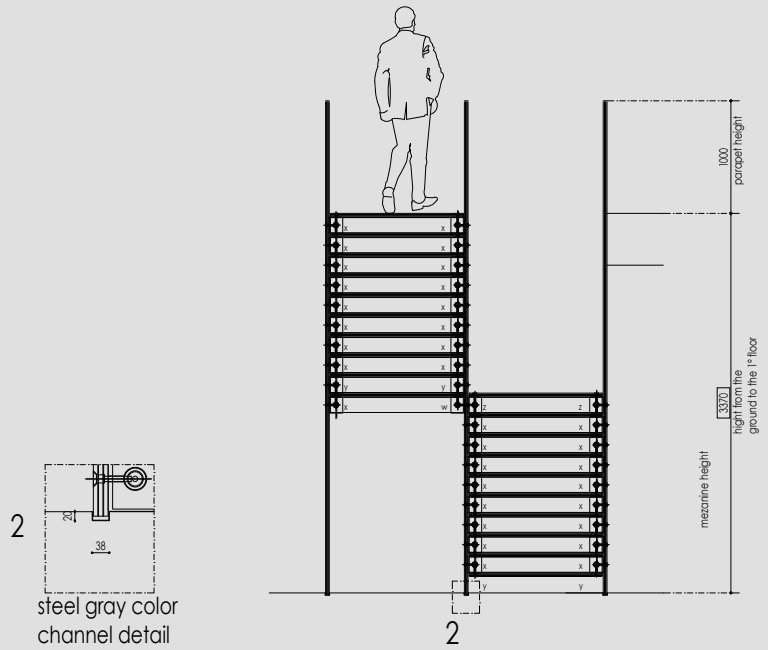


A MONOLITIC GLASS STAIRCASE DESIGNED BY CARLO SANTAMBROGIO FOR THE NEW SHOWROOM KEHA CASA IN BANGALORE. THE STAIRCASE CONTINUES UP TO THE SECOND FLOOR, PLAYING WITH THE LIGHT AND TRANSPARENCY EMANATING A SENSE OF EXTENDED PROPORTIONS.



BANGALORE

EXPERIENCE



floor steel channel position



PROJECT DETAILS
REF. GA-1115
BY CARLO SANTAMBROGIO ARCHITECT
IN COLLABORATION WITH
VIKRAM PHADKE

LOCATION:
BANGALORE - INDIA

SKILL:

DELIVERY TIME FROM THE ORDER:
3 MONTHS

INSTALLATION TIME:
2 WEEKS

KIND OF GLASS USED:
STRUCTURE MADE IN EXTRACLEAR
TRANSPARENT GLASS THICK 45 mm
TEMPERED AND MULTILAYER PROCESS
WITH SGP INTERLAYER

USED GLASS QUANTITY:
420.00 sqm



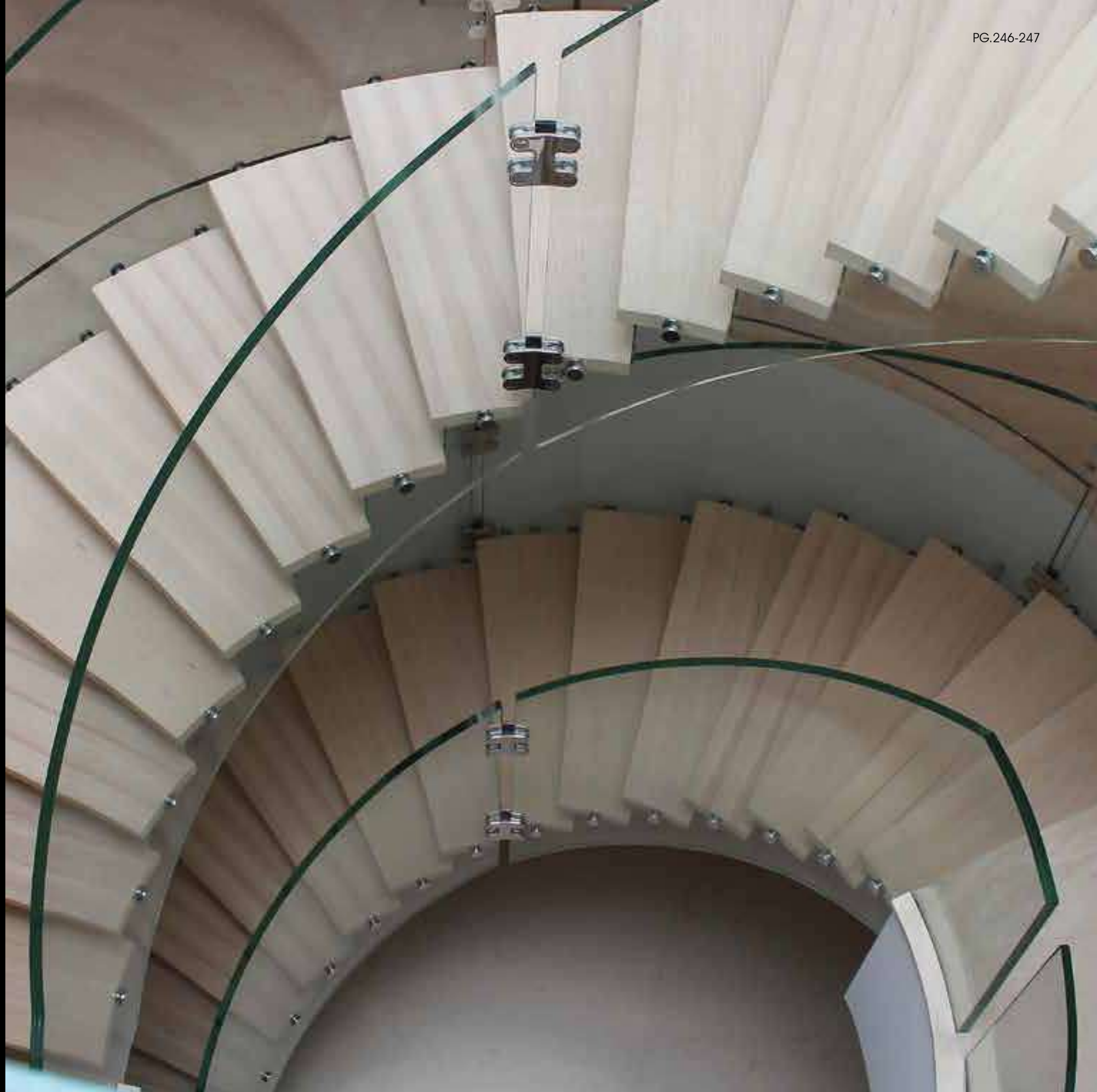


STAIRCASE TO HEAVEN

WHEN DESIGNING A BUILDING, THERE ARE MANY IMPORTANT THINGS TO CONSIDER IN ORDER TO ACHIEVE GOOD RESULTS, ONE OF WHICH IS THE ESSENTIAL STAIR. THIS LONDON PROJECT WAS DESIGNED BY SANTAMBROGIO | MILANO.

THE HELICAL SHAPE AND THE USE OF TWO DIFFERENT MATERIALS SUCH AS WOOD AND GLASS, ARE JUST SOME OF THE FEATURES THAT MAKE THIS STAIRCASE A UNIQUE DESIGN STATEMENT.







PROJECT DETAILS
REF. GA-1111
BY CARLO SANTAMBROGIO ARCHITECT
IN COLLABORATION WITH
BESTETTI ASSOCIATI

LOCATION:
LONDON - U.K.

SKILL:

DELIVERY TIME FROM THE ORDER:
6 MONTHS

INSTALLATION TIME:
3 WEEKS

KIND OF GLASS USED:
STRUCTURE MADE IN EXTRACLEAR TRANSPARENT CURVED GLASS
THICK 45 mm TEMPERED AND MULTILAYER PROCESS
WITH SGP INTERLAYER

STEPS MADE IN WOOD WITH INTERNAL STEEL STRUCTURE

USED GLASS QUANTITY:
490.00 sqm

A
SUSPENDED
GLASS
STAIRCASE.
WHEN YOU
CAN'T DO
WITHOUT IT





THE VALUE
OF
OUR
PERFORMANCE



OUR SELF IMPOSED
STANDARDS OF THE
HIGHEST QUALITY
OBLIGE US TO FOLLOW
EVERY DETAIL OF THE
PROJECT, FROM CONCEPT
TO REALIZATION,
AND DELIVERY AND
INSTALLATION AS WELL.
ALWAYS UNDER OUR
RESPONSIBILITY. WHAT
WE ARE ABLE TO ACHIEVE
TODAY WILL REMAIN
UNIQUE FOREVER



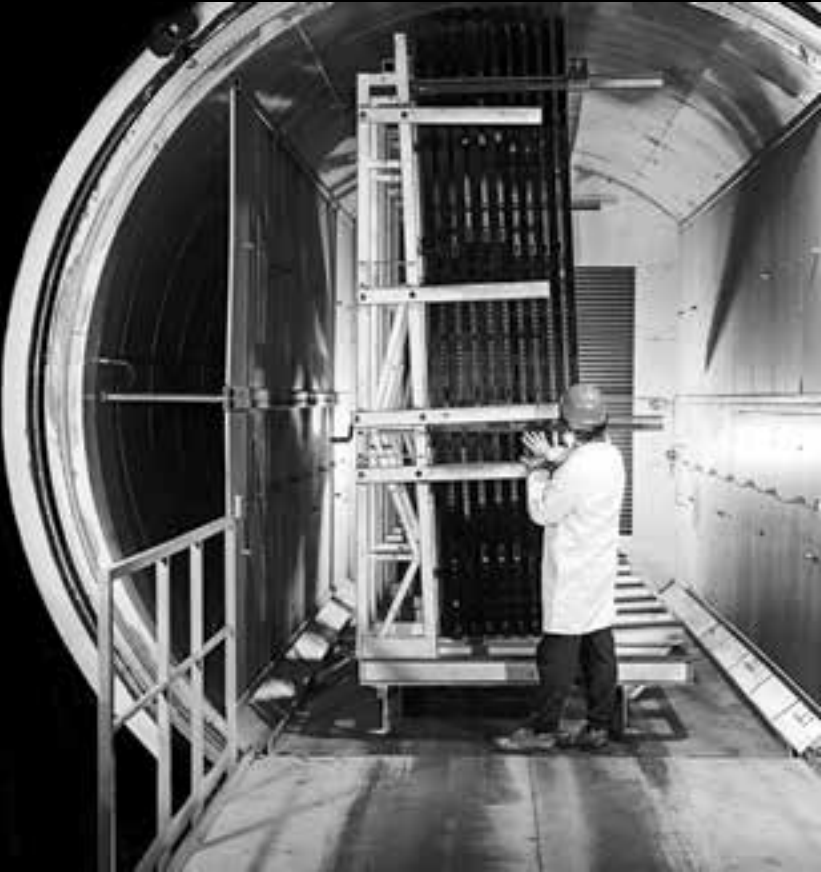
SANTAMBROGIO | MILANO
ENGINEERING:
THE COMPONENT
THAT MAKES
EVERY
PROJECT
POSSIBLE



SANTAMBROGIO | MILANO PRODUCTION



SANTAMBROGIO | MILANO GLASS



ACCORDING TO OUR PHILOSOPHY, IMPROVING PEOPLE'S COMFORT ALSO MEANS RESPECTING THE REACHNESS AND UNIQUENESS OF OUR PLANET. AS THESE TWO ASPECTS ARE CLOSELY CONNECTED, ALL OUR PROJECTS ARE CONCEIVED AND REALISED WITH RESPECT FOR THE ENVIRONMENT. AND THIS IS ONE OF THE FUNDAMENTAL RULES OF OUR PROJECT, AIMED AT



REDUCING THE AMOUNT OF MATERIALS USED AND THEIR ENVIRONMENTAL IMPACT. PURE, PRECIOUS AND RESISTANT, OUR GLASS IS TEMPERED AND STRATIFIED. IT AROUSES INFINITE SENSATIONS : TRANSPARENT, SHINY, OPAQUE, IT CAN BE DECLINED IN A THOUSAND COLOURS TO ACHIEVE THE MAXIMUM PERSONALISATION.

SANTAMBROGIO | MILANO INSTALLATION



santambrogio milano

on off design ideas